

| | MONTHLY AVERAGES (CDN\$/Metric Tonne) | | | | | | | | | | | | | | | | | | # of Muni. (Monthly Change) | Price Range (CDN/Metric Tonne) |
|--|---------------------------------------|-------------|--------------|-------------|-------------|-------------|-------------|-------------|-------------|-------------|-------------|--------------|--------------|-------------|--------------|-------------|-------------|-------------|-----------------------------------|--------------------------------------|
| | July 2021 | Aug 2021 | Sept 2021 | Oct 2021 | Nov 2021 | Dec 2021 | Jan 2022 | Feb 2022 | Mar 2022 | Apr 2022 | May 2022 | June 2022 | July 2022 | Aug 2022 | Sept 2022 | Oct 2022 | Nov 2022 | Dec 2022 | | |
| Newspaper (ONP #8 / SRP #56) ¹ | 160 | 183 | 205 | 204 | 186 | 174 | 171 | 171 | 190 | 181 | 187 | 190 | 193 | 161 | 139 | 73 | 49 | 50 | 6 (0) | 35 - 60 |
| Mixed Paper #54 / ONP#6 ² | 83 | 109 | 150 | 146 | 126 | 113 | 102 | 95 | 106 | 107 | 107 | 109 | 101 | 55 | 13 | (10) | (22) | (14) | 7 (0) | (30) - 0 |
| Corrugated (OCC) | 214 | 262 | 282 | 278 | 249 | 234 | 223 | 223 | 219 | 218 | 213 | 216 | 187 | 128 | 68 | 57 | 62 | 11 (0) | 52 - 79 | |
| Hardpack (OBB/OCC) | 98 | 132 | 190 | 176 | 152 | 135 | 121 | 129 | 135 | 142 | 124 | 132 | 123 | 81 | 44 | (1) | (5) | (5) | 6 (0) | (42) - 14 |
| Boxboard (OBB) | na | na | na | na | na | na | na | na | na | na | na | na | na | na | na | na | na | na | 1 (0) | na |
| Polycoat Containers | 21 | 25 | 17 | 23 | 39 | 34 | 31 | 39 | 42 | 68 | 50 | 64 | na | 67 | na | na | 40 | 34 | 4 (-4) | 7 - 45 |
| PET (mixed) | 642 | 711 | 738 | 639 | 514 | 469 | 489 | 704 | 905 | 1171 | 1261 | 1183 | 640 | 283 | 169 | 186 | 247 | 293 | 13 (-1) | 208 - 374 |
| HDPE (mixed) | 1700 | 1747 | 1751 | 1725 | 1309 | 835 | 629 | 723 | 828 | 970 | 941 | 841 | 509 | 328 | 219 | 240 | 301 | 276 | 11 (-3) | 175 - 339 |
| Plastic Tubs & Lids | na | na | na | na | na | na | na | na | na | na | na | na | na | na | na | na | na | na | 1 (0) | na |
| Mixed Plastics ³ | 315 | 318 | 278 | 180 | 182 | 175 | 183 | 237 | 273 | 378 | 492 | 402 | 80 | 97 | 51 | 47 | 54 | 48 | 11 (0) | 29 - 91 |
| Film Plastic | 20 | 20 | 27 | 17 | 22 | 13 | 10 | 24 | 30 | 41 | 40 | na | na | 17 | na | na | na | (53) | 4 (2) | (105) - 0 |
| Aluminum Cans | 1901 | 2040 | 2246 | 2390 | 2289 | 2287 | 2334 | 2700 | 3253 | 3392 | 2988 | 2597 | 2251 | 2085 | 2002 | 1920 | 1978 | 2039 | 12 (-1) | 1322 - 2247 |
| Steel Cans | 475 | 465 | 436 | 442 | 487 | 493 | 427 | 414 | 516 | 538 | 443 | 370 | 343 | 310 | 285 | 277 | 254 | 270 | 13 (-1) | 226 - 295 |
| Glass (mixed) | (44) | (40) | (31) | (43) | (42) | (40) | (41) | (41) | (41) | (42) | (44) | (44) | (44) | (44) | (44) | (49) | (52) | (47) | 5 (0) | (80) - 0 |
| Composite Index | 236 | 267 | 293 | 281 | 247 | 224 | 220 | 248 | 286 | 316 | 312 | 288 | 223 | 164 | 117 | 86 | 84 | 92 | | |
| Fibre Composite Index⁴ | 145 | 178 | 209 | 205 | 182 | 167 | 158 | 160 | 166 | 166 | 164 | 160 | 162 | 126 | 80 | 34 | 21 | 27 | | |
| Container Composite Index⁵ | 441 | 468 | 482 | 452 | 396 | 352 | 341 | 421 | 522 | 613 | 605 | 540 | 343 | 238 | 190 | 188 | 207 | 222 | | |

| | YEARLY AVERAGES (CDN\$/Metric Tonne) | | | | | | | | | | | | | | | | | | |
|--|--------------------------------------|------------|------------|------------|-----------|------------|------------|------------|------------|------------|------------|------------|------------|------------|------------|------------|------------|------------|------------|
| | 2005 | 2006 | 2007 | 2008 | 2009 | 2010 | 2011 | 2012 | 2013 | 2014 | 2015 | 2016 | 2017 | 2018 | 2019 | 2020 | 2021 | 2022 | |
| Newspaper (ONP #8 / SRP #56) ¹ | 101 | 89 | 118 | 121 | 72 | 90 | 126 | 76 | 71 | 69 | 72 | 103 | 111 | 62 | 44 | 58 | 145 | 146 | |
| Mixed Paper #54 / ONP#6 ² | | | | | | | | | | | 43 | 73 | 73 | 2 | (18) | (4) | 78 | 62 | |
| Corrugated (OCC) | 95 | 80 | 131 | 111 | 68 | 149 | 173 | 133 | 131 | 131 | 127 | 152 | 221 | 128 | 84 | 117 | 201 | 170 | |
| Hardpack (OBB/OCC) | 68 | 50 | 89 | 76 | 42 | 74 | 95 | 61 | 53 | 51 | 66 | 91 | 121 | 57 | 19 | 30 | 103 | 85 | |
| Boxboard (OBB) | 53 | 41 | 70 | 62 | 26 | 61 | 84 | 62 | 46 | 48 | 50 | 50 | na | na | na | na | na | na | |
| Polycoat Containers | 66 | 59 | 84 | 75 | 39 | 105 | 127 | 96 | 65 | 79 | 114 | 114 | 64 | 63 | 40 | 20 | 14 | 48 | |
| PET (mixed) | 507 | 514 | 368 | 352 | 187 | 391 | 652 | 431 | 372 | 377 | 295 | 265 | 383 | 431 | 377 | 212 | 470 | 628 | |
| HDPE (mixed) | 683 | 565 | 524 | 573 | 320 | 464 | 562 | 552 | 497 | 659 | 617 | 533 | 497 | 483 | 444 | 310 | 1227 | 567 | |
| Plastic Tubs & Lids | 104 | 128 | 146 | 204 | 22 | 54 | 247 | 265 | na | na | na | na | na | na | na | na | na | na | |
| Mixed Plastics ³ | | | | | | | 48 | 32 | 38 | 46 | 58 | 61 | 32 | 47 | 74 | 82 | 220 | 195 | |
| Film Plastic | 148 | 137 | 51 | 35 | 3 | 13 | 25 | 23 | 14 | 29 | 47 | 40 | 24 | 15 | 3 | (21) | 4 | 16 | |
| Aluminum Cans | 1763 | 2169 | 2065 | 1904 | 1215 | 1591 | 1790 | 1516 | 1523 | 1783 | 1548 | 1576 | 1772 | 1733 | 1354 | 1311 | 1995 | 2462 | |
| Steel Cans | 116 | 141 | 168 | 245 | 89 | 263 | 335 | 277 | 257 | 299 | 179 | 200 | 262 | 322 | 253 | 215 | 431 | 371 | |
| Glass (mixed) | (31) | (31) | (31) | (24) | (18) | (15) | (11) | (18) | (22) | (22) | (30) | (37) | (42) | (41) | (38) | (37) | (41) | (44) | |
| Composite Index | 124 | 111 | 145 | 150 | 80 | 124 | 169 | 118 | 107 | 117 | 105 | 129 | 154 | 118 | 90 | 82 | 204 | 203 | |
| Fibre Composite Index⁴ | | | | | | | | | | | | 77 | 109 | 132 | 75 | 49 | 51 | 136 | 119 |
| Container Composite Index⁵ | | | | | | | | | | | | 188 | 184 | 217 | 239 | 205 | 160 | 359 | 369 |

Disclaimer: The CIF Price Sheet provides an estimate of the average commodity prices from a sample of municipalities located across Ontario. Please note the estimate in no way represents, reflects or captures all municipal conditions. You acknowledge that in using the CIF Price Sheet neither CIF, nor any of its agents, partners, affiliates, directors, employees, assigns and associates may be held liable, responsible or accountable for any type of damage, litigation or other legal action that may arise directly or indirectly from the reliance on the CIF Price Sheet.

Pricing Notes:

- Paper Stock Industries (PSI) have eliminated the ONP#8 grade specification. For continuity, the new PSI grade specification, Sorted Residential Paper (SRP #56), has been included as it most closely represents the ONP#8 commodity ON municipalities are producing.
- Paper Stock Industries (PSI) have eliminated the ONP#6 grade specification and added a new PSI grade specification, Mixed Paper #54. Mixed Paper has already been capture on the price sheet with the new grade number being added.
- The composition for mixed plastics varies from each municipality based on the range of materials accepted and the specifications from their end markets.
- The Fibre Composite Index is calculated using ONP#8 / SRP#56, Mixed Paper #54 / ONP#6, Corrugated (OCC), Hardpack (OBB/OCC), and Boxboard (OBB).
- Polycoat containers are included in the container composite index and NOT the fibre composite index.

General Notes:

- Prices are for baled post-consumer residential materials except glass, which is loose.
- As of May 2012, prices for all materials are FOB the municipality including glass. Prior to May 2012, prices for glass were delivered prices.
- The Composite Index is calculated using the overall composition of residential Blue Box material recovered and marketed in Ontario as reported from the approved 2020 RPRA (formerly WDO) Datacall with some additional allocations to material categories. Mixed glass includes coloured glass. Composition figures are updated annually. Details available upon request.
- Materials with a listed price of "NA" indicate either an insufficient number of municipalities reported a price in the given month (<4) or variation in the reported price which is not considered representative of Ontario.
- Prices are compiled from a range of municipal programs across Ontario combined with information from industry representatives. Prices may not be the same as actual prices being paid in any given program.
- "Price Range" reflects the second highest and lowest prices used in calculating the average (trim mean). The highest and lowest prices have been excluded to account for outliers/unique local conditions.

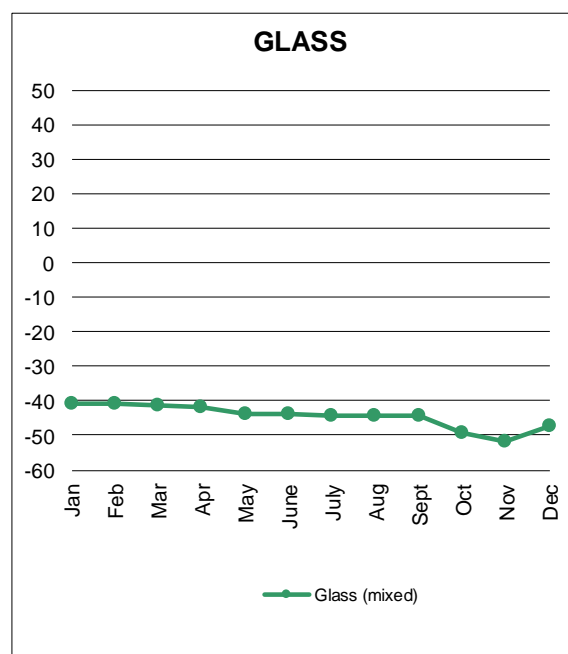
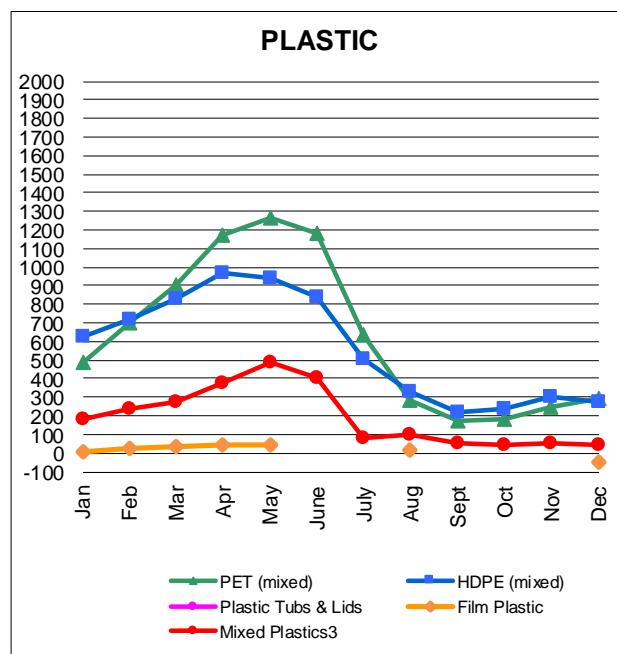
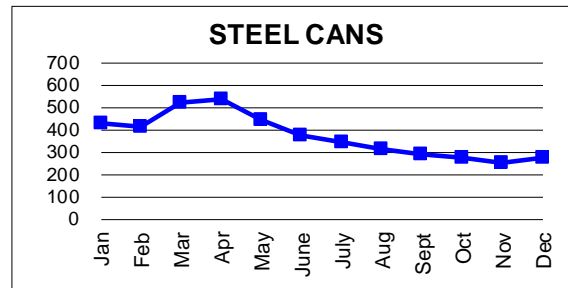
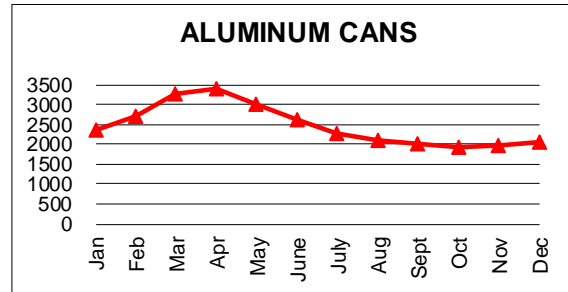
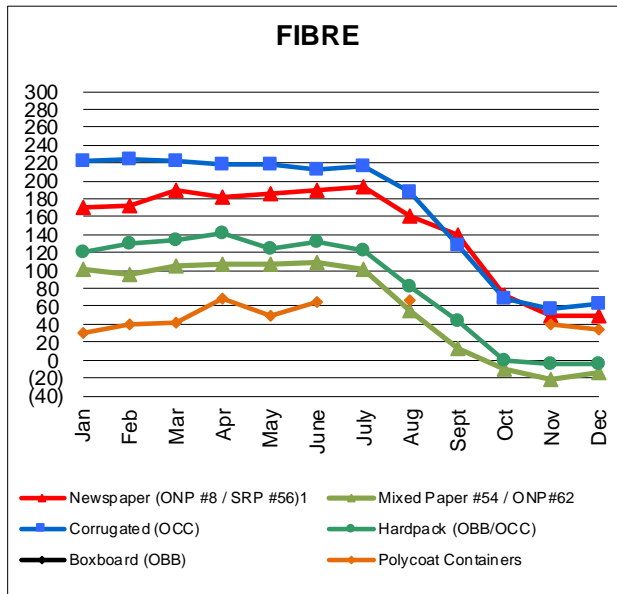
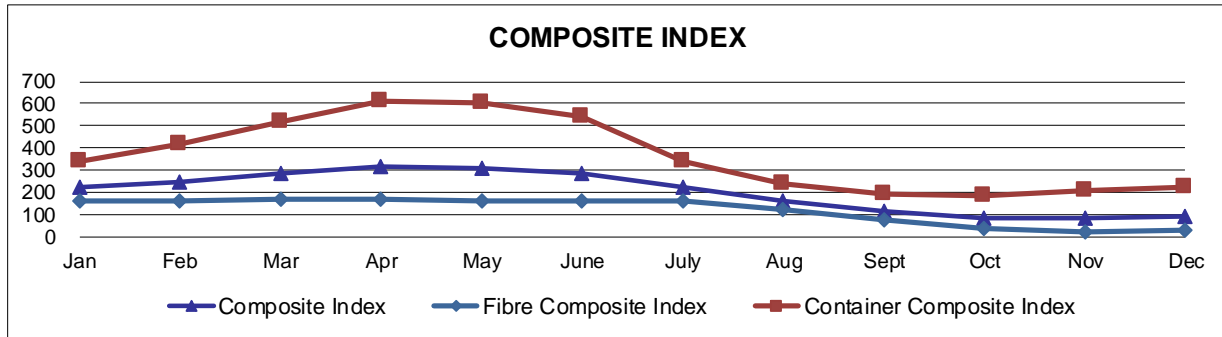
For more information:

Neil Menezes, EcoCompass Inc.
nmenezes@ecocompass.ca, 416-735-3674

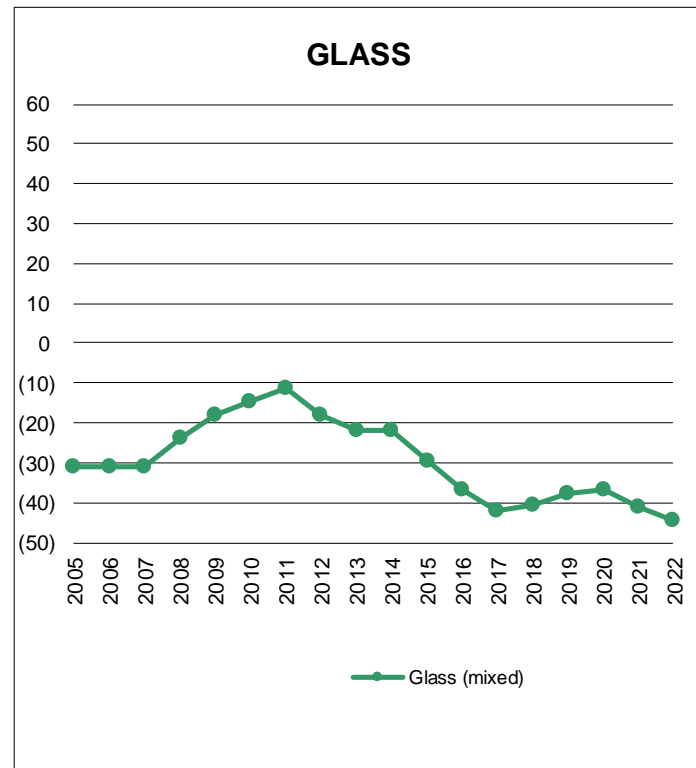
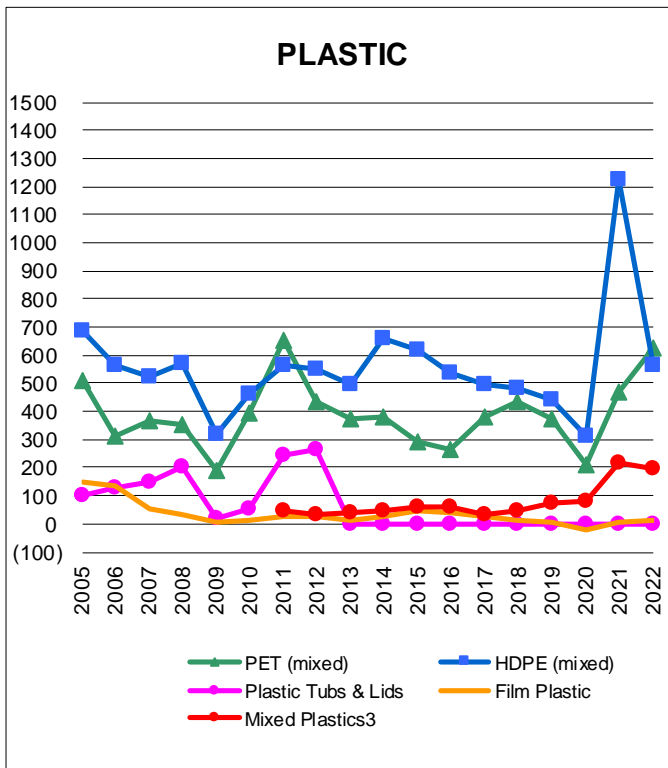
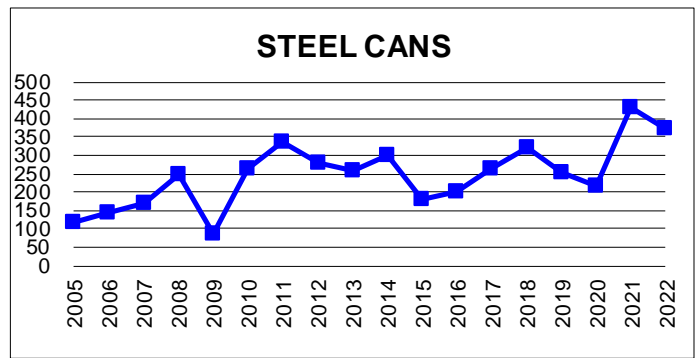
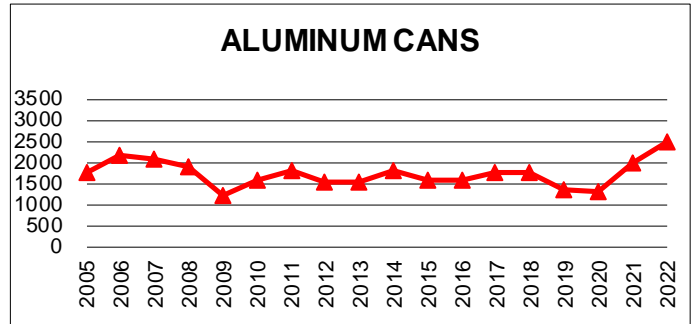
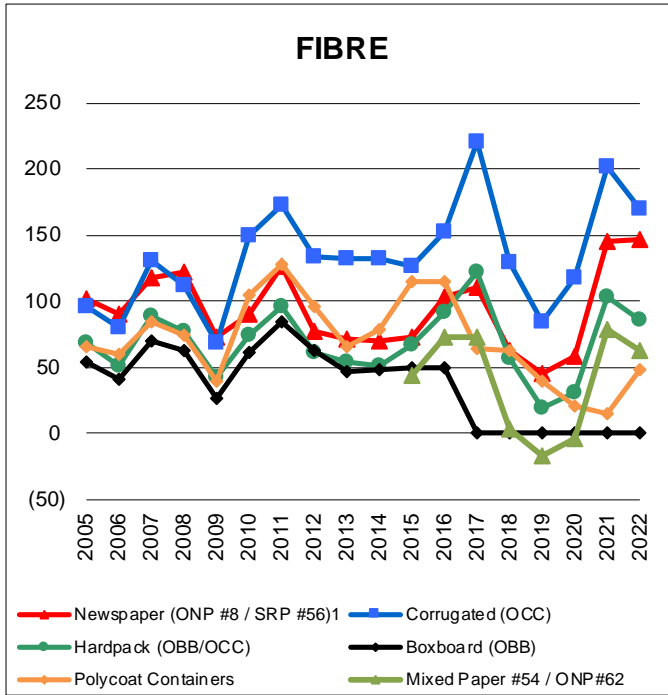
© CIF 2022

Produced for CIF by:





Graphs produced from Monthly Averages Table.



Graphs produced from Yearly Averages Table