

	MONTHLY AVERAGES (CDN\$/Metric Tonne)																	# of Muni. (Monthly Change)	Price Range (CDN/Metric Tonne)	
	July 2020	Aug 2020	Sept 2020	Oct 2020	Nov 2020	Dec 2020	Jan 2021	Feb 2021	Mar 2021	Apr 2021	May 2021	June 2021	July 2021	Aug 2021	Sept 2021	Oct 2021	Nov 2021			Dec 2021
Newspaper (ONP #8 / SRP #56) <sup>1</sup>	66	70	77	79	81	84	80	94	99	110	111	135	160	183	205	204	186	174	6 (0)	169 - 190
Mixed Paper #54 / ONP#6 <sup>2</sup>	(1)	7	5	13	15	25	26	21	32	35	38	56	83	109	150	146	126	113	7 (0)	95 - 136
Corrugated (OCC)	107	107	103	106	106	113	126	131	145	159	155	176	214	262	282	278	249	234	11 (0)	212 - 248
Hardpack (OBB/OCC)	23	25	23	26	28	38	48	45	53	62	62	81	98	132	190	176	152	135	6 (0)	116 - 176
Boxboard (OBB)	na	na	na	na	na	na	na	na	na	na	na	na	na	na	na	na	na	na	1 (0)	na
Polycoat Containers	34	na	20	13	10	(13)	2	(18)	na	13	(9)	9	21	25	17	23	39	34	9 (1)	7 - 49
PET (mixed)	192	173	172	138	148	157	157	215	252	313	412	574	642	711	738	639	514	469	13 (-1)	375 - 564
HDPE (mixed)	140	150	220	465	633	538	569	642	751	999	1246	1454	1700	1747	1751	1725	1309	835	12 (-1)	680 - 1111
Plastic Tubs & Lids	na	na	na	na	na	na	na	na	na	na	na	na	na	na	na	na	na	na	2 (0)	na
Mixed Plastics <sup>3</sup>	64	77	68	79	89	103	98	100	176	205	317	292	315	318	278	180	182	175	10 (-1)	164 - 186
Film Plastic	(25)	na	na	(20)	na	(41)	(38)	(37)	(14)	(9)	2	29	20	20	27	17	22	13	5 (0)	(20) - 40
Aluminum Cans	1249	1295	1349	1342	1402	1585	1628	1699	1849	1908	1887	1817	1901	2040	2246	2390	2289	2287	12 (-2)	2004 - 2537
Steel Cans	167	171	210	218	222	303	399	348	398	384	393	455	475	465	436	442	487	493	14 (0)	437 - 531
Glass (mixed)	(35)	(35)	(35)	(40)	(46)	(48)	(45)	(42)	(41)	(41)	(42)	(40)	(44)	(40)	(31)	(43)	(42)	(40)	6 (0)	(67) - (22)
<b>Composite Index</b>	<b>74</b>	<b>76</b>	<b>80</b>	<b>85</b>	<b>91</b>	<b>100</b>	<b>113</b>	<b>120</b>	<b>139</b>	<b>156</b>	<b>171</b>	<b>202</b>	<b>236</b>	<b>267</b>	<b>293</b>	<b>281</b>	<b>247</b>	<b>224</b>		
<b>Fibre Composite Index<sup>4</sup></b>	<b>51</b>	<b>54</b>	<b>54</b>	<b>59</b>	<b>60</b>	<b>67</b>	<b>74</b>	<b>75</b>	<b>86</b>	<b>95</b>	<b>95</b>	<b>115</b>	<b>145</b>	<b>178</b>	<b>209</b>	<b>205</b>	<b>182</b>	<b>167</b>		
<b>Container Composite Index<sup>5</sup></b>	<b>134</b>	<b>133</b>	<b>145</b>	<b>154</b>	<b>171</b>	<b>185</b>	<b>204</b>	<b>220</b>	<b>259</b>	<b>295</b>	<b>345</b>	<b>400</b>	<b>441</b>	<b>468</b>	<b>482</b>	<b>452</b>	<b>396</b>	<b>352</b>		

	YEARLY AVERAGES (CDN\$/Metric Tonne)																	
	2004	2005	2006	2007	2008	2009	2010	2011	2012	2013	2014	2015	2016	2017	2018	2019	2020	2021
Newspaper (ONP #8 / SRP #56) <sup>1</sup>	114	101	89	118	121	72	90	126	76	71	69	72	103	111	62	44	58	145
Mixed Paper #54 / ONP#6 <sup>2</sup>												43	73	73	2	(18)	(4)	78
Corrugated (OCC)	114	95	80	131	111	68	149	173	133	131	131	127	152	221	128	84	117	201
Hardpack (OBB/OCC)	75	68	50	89	76	42	74	95	61	53	51	66	91	121	57	19	30	103
Boxboard (OBB)	62	53	41	70	62	26	61	84	62	46	48	50	50					
Polycoat Containers	67	66	59	84	75	39	105	127	96	65	79	114	114	64	63	40	20	14
PET (mixed)	432	507	314	368	352	187	391	652	431	372	377	295	265	383	431	377	212	470
HDPE (mixed)	428	683	565	524	573	320	464	562	552	497	659	617	533	497	483	444	310	1227
Plastic Tubs & Lids	51	104	128	146	204	22	54	247	265									
Mixed Plastics <sup>3</sup>								48	32	38	46	58	61	32	47	74	82	220
Film Plastic	55	148	137	51	35	3	13	25	23	14	29	47	40	24	15	3	(21)	4
Aluminum Cans	1772	1763	2169	2065	1904	1215	1591	1790	1516	1523	1783	1548	1576	1772	1733	1354	1311	1995
Steel Cans	191	116	141	168	245	89	263	335	277	257	299	179	200	262	322	253	215	431
Glass (mixed)	(12)	(31)	(31)	(31)	(24)	(18)	(15)	(11)	(18)	(22)	(22)	(30)	(37)	(42)	(41)	(38)	(37)	(41)
<b>Composite Index</b>	<b>131</b>	<b>124</b>	<b>111</b>	<b>145</b>	<b>150</b>	<b>80</b>	<b>124</b>	<b>169</b>	<b>118</b>	<b>107</b>	<b>117</b>	<b>105</b>	<b>129</b>	<b>154</b>	<b>118</b>	<b>90</b>	<b>82</b>	<b>204</b>
<b>Fibre Composite Index<sup>4</sup></b>												<b>77</b>	<b>109</b>	<b>132</b>	<b>75</b>	<b>49</b>	<b>51</b>	<b>136</b>
<b>Container Composite Index<sup>5</sup></b>												<b>188</b>	<b>184</b>	<b>217</b>	<b>239</b>	<b>205</b>	<b>160</b>	<b>359</b>

Disclaimer: The CIF Price Sheet provides an estimate of the average commodity prices from a sample of municipalities located across Ontario. Please note the estimate in no way represents, reflects or captures all municipal conditions. You acknowledge that in using the CIF Price Sheet neither CIF, nor any of its agents, partners, affiliates, directors, employees, assigns and associates may be held liable, responsible or accountable for any type of damage, litigation or other legal action that may arise directly or indirectly from the reliance on the CIF Price Sheet.

**Pricing Notes:**

- Paper Stock Industries (PSI) have eliminated the ONP#8 grade specification. For continuity, the new PSI grade specification, Sorted Residential Paper (SRP #56), has been included as it most closely represents the ONP#8 commodity ON municipalities are producing.
- Paper Stock Industries (PSI) have eliminated the ONP#6 grade specification and added a new PSI grade specification, Mixed Paper #54. Mixed Paper has already been captured on the price sheet with the new grade number being added.
- The composition for mixed plastics varies from each municipality based on the range of materials accepted and the specifications from their end markets.
- The Fibre Composite Index is calculated using ONP#8 / SRP#56, Mixed Paper #54 / ONP#6, Corrugated (OCC), Hardpack (OBB/OCC), and Boxboard (OBB).
- Polycoat containers are included in the container composite index and NOT the fibre composite index.

**General Notes:**

- Prices are for baled post-consumer residential materials except glass, which is loose.
- As of May 2012, prices for all materials are FOB the municipality including glass. Prior to May 2012, prices for glass were delivered prices.
- The Composite Index is calculated using the overall composition of residential Blue Box material recovered and marketed in Ontario as reported from the approved 2019 RPRA (formerly WDO) Datacall with some additional allocations to material categories. Mixed glass includes coloured glass. Composition figures are updated annually. Details available upon request.
- Materials with a listed price of "NA" indicate either an insufficient number of municipalities reported a price in the given month (<4) or variation in the reported price which is not considered representative of Ontario.
- Prices are compiled from a range of municipal programs across Ontario combined with information from industry representatives. Prices may not be the same as actual prices being paid in any given program.
- "Price Range" reflects the second highest and lowest prices used in calculating the average (trim mean). The highest and lowest prices have been excluded to account for outliers/unique local conditions.

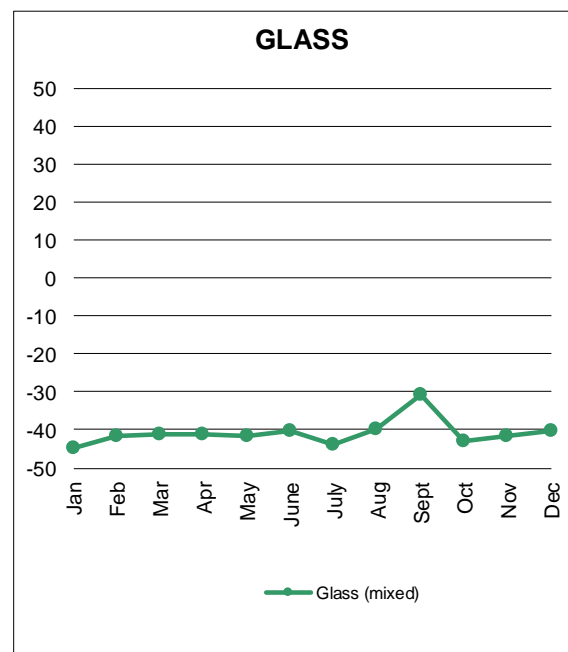
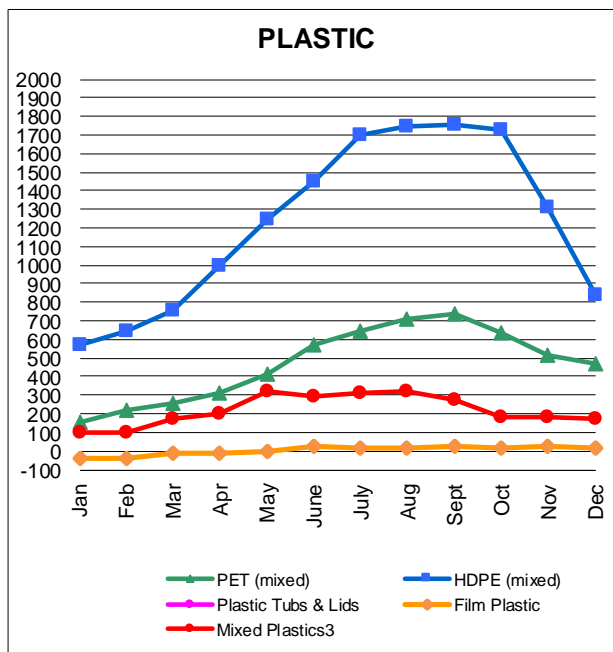
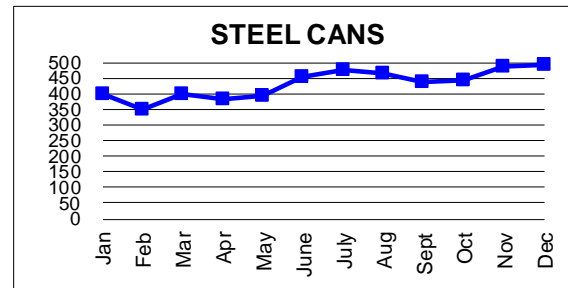
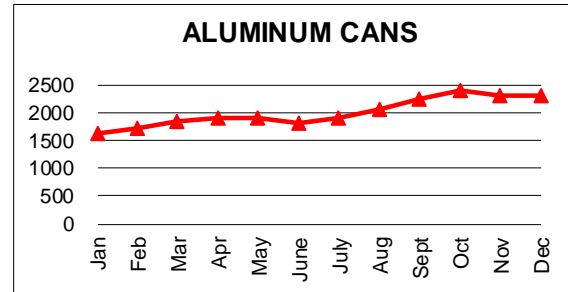
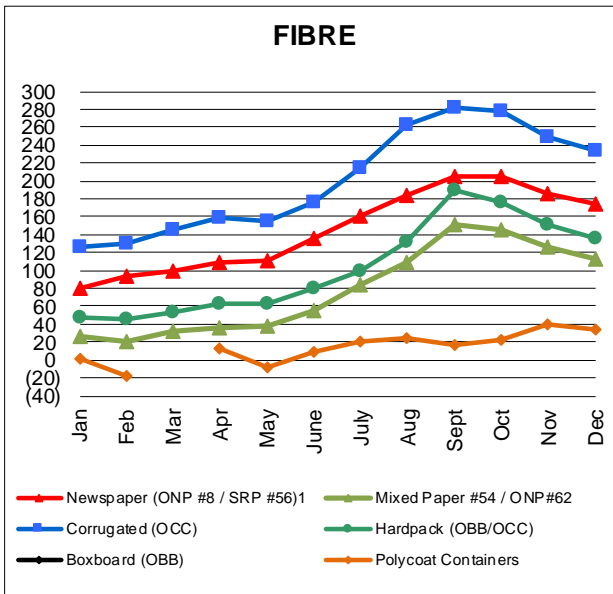
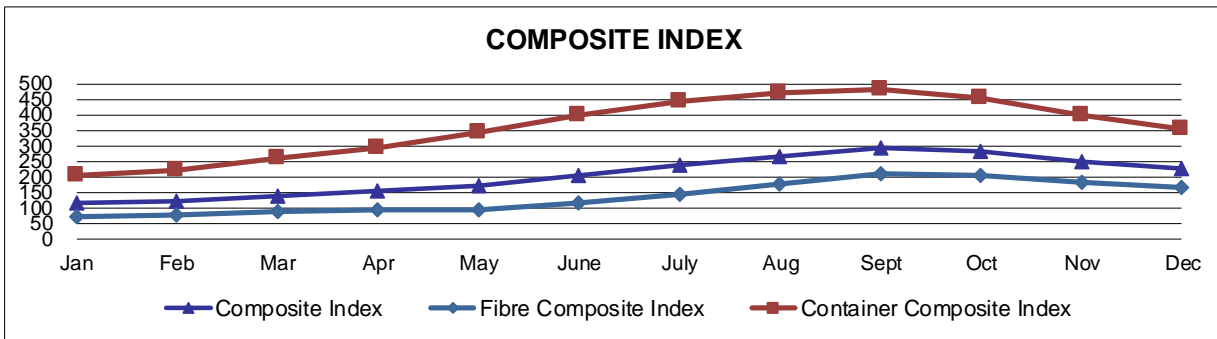
For more information:

Neil Menezes, EcoCompass Inc.  
[nmenezes@ecocompass.ca](mailto:nmenezes@ecocompass.ca), 416-735-3674

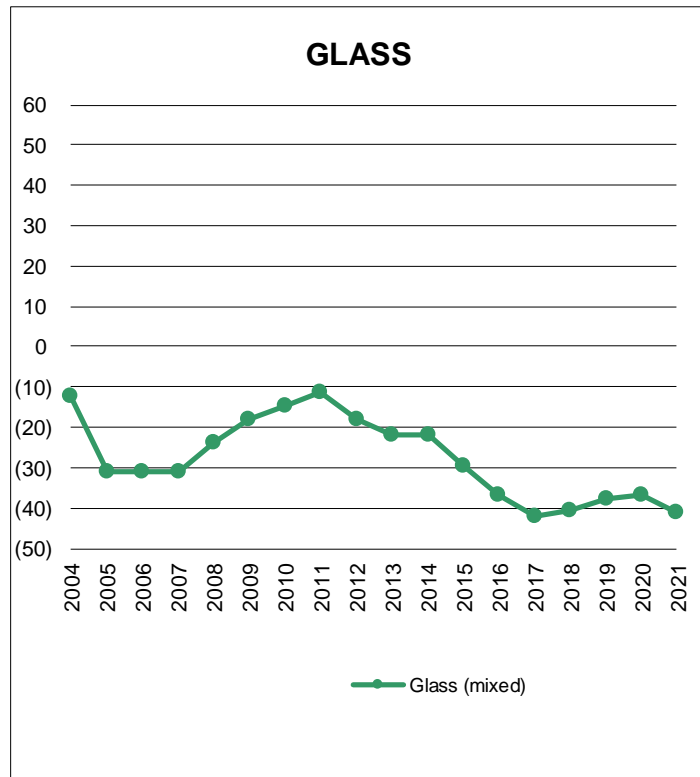
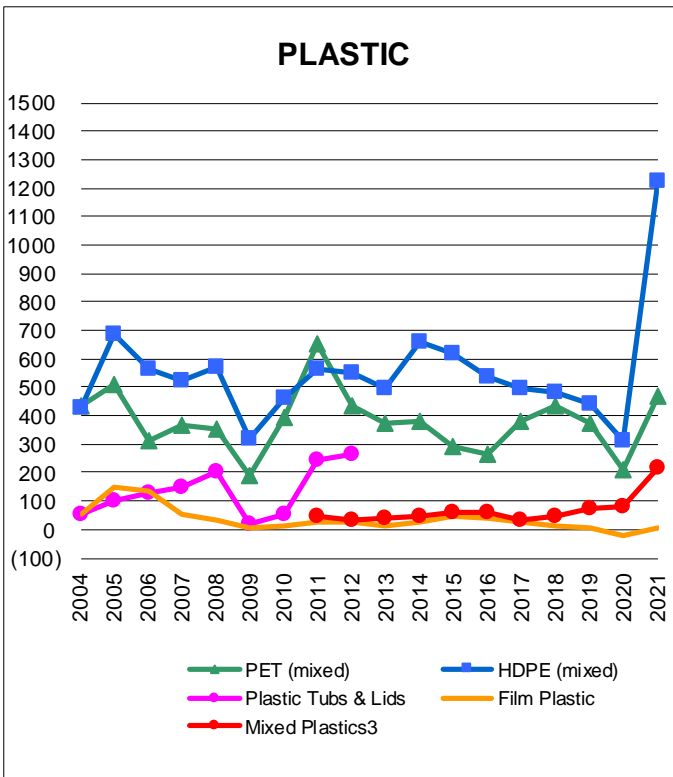
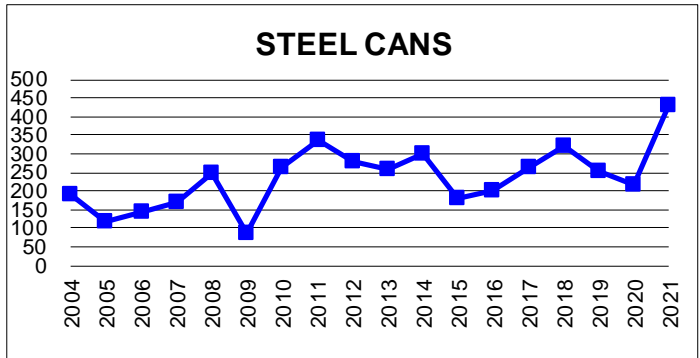
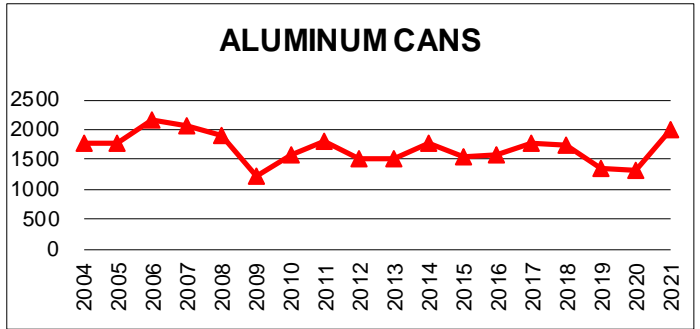
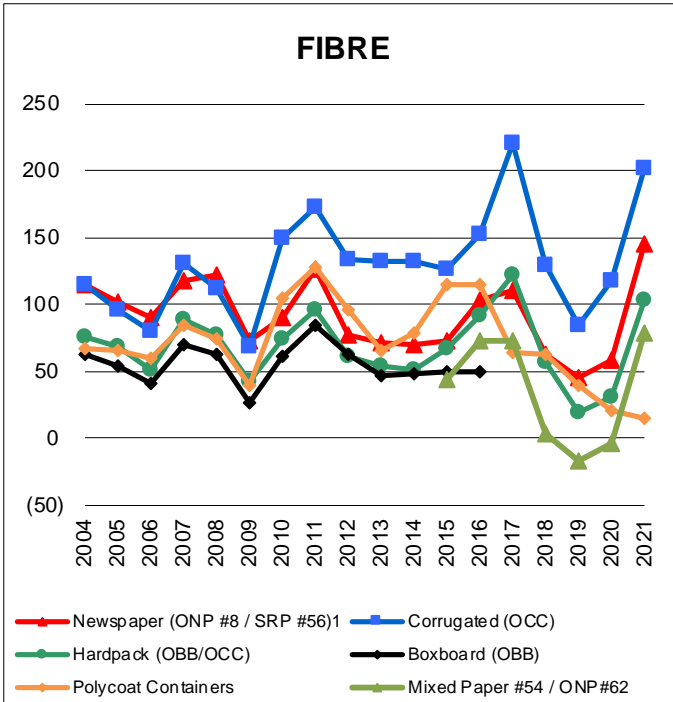
© CIF 2021

Produced for CIF by:





Graphs produced from Monthly Averages Table.



Graphs produced from Yearly Averages Table