

	MONTHLY AVERAGES (CDN\$/Metric Tonne)																		# of Muni. (Monthly Change)	Price Range (CDN/Metric Tonne)
	Mar 2020	Apr 2020	May 2020	June 2020	July 2020	Aug 2020	Sept 2020	Oct 2020	Nov 2020	Dec 2020	Jan 2021	Feb 2021	Mar 2021	Apr 2021	May 2021	June 2021	July 2021	Aug 2021		
Newspaper (ONP #8 / SRP #56) ¹	29	39	63	59	66	70	77	79	81	84	80	94	99	110	111	135	160	183	6 (0)	147 - 217
Mixed Paper #54 / ONP#6 ²	(35)	(5)	(4)	3	(1)	7	5	13	15	25	26	21	32	35	38	56	83	109	6 (0)	(30) - 164
Corrugated (OCC)	99	163	220	141	107	107	103	106	106	113	126	131	145	159	155	176	214	262	10 (-1)	240 - 277
Hardpack (OBB/OCC)	18	56	73	38	23	25	23	26	28	38	48	45	53	62	62	81	98	132	5 (0)	(42) - 222
Boxboard (OBB)	na	na	na	na	na	na	na	na	na	na	na	na	na	na	na	na	na	na	2 (1)	na
Polycoat Containers	12	40	61	47	34	na	20	13	10	(13)	2	(18)	na	13	(9)	9	21	25	7 (2)	10 - 48
PET (mixed)	287	299	256	209	192	173	172	138	148	157	157	215	252	313	412	574	642	711	14 (0)	640 - 765
HDPE (mixed)	298	158	148	154	140	150	220	465	633	538	569	642	751	999	1246	1454	1700	1747	13 (1)	1696 - 1795
Plastic Tubs & Lids	na	na	na	na	na	na	na	na	na	na	na	na	na	na	na	na	na	na	1 (1)	na
Mixed Plastics ³	98	81	79	72	64	77	68	79	89	103	98	100	176	205	317	292	315	318	11 (1)	166 - 750
Film Plastic	na	(8)	(25)	na	(25)	na	na	(20)	na	(41)	(38)	(37)	(14)	(9)	2	29	20	20	5 (0)	(57) - 45
Aluminum Cans	1309	1166	1193	1275	1249	1295	1349	1342	1402	1585	1628	1699	1849	1908	1887	1817	1901	2040	12 (-2)	1543 - 2292
Steel Cans	240	181	200	195	167	171	210	218	222	303	399	348	398	384	393	455	475	465	14 (1)	415 - 516
Glass (mixed)	(36)	(36)	(35)	(31)	(35)	(35)	(35)	(40)	(46)	(48)	(45)	(42)	(41)	(41)	(42)	(40)	(44)	(40)	6 (1)	(80) - 0
Composite Index	70	89	105	86	74	76	80	85	91	100	113	120	139	156	171	202	236	267		
Fibre Composite Index⁴	27	61	86	62	51	54	54	59	60	67	74	75	86	95	95	115	145	178		
Container Composite Index⁵	182	160	153	147	134	133	145	154	171	185	204	220	259	295	345	400	441	468		

	YEARLY AVERAGES (CDN\$/Metric Tonne)																	
	2004	2005	2006	2007	2008	2009	2010	2011	2012	2013	2014	2015	2016	2017	2018	2019	2020	2021
Newspaper (ONP #8 / SRP #56) ¹	114	101	89	118	121	72	90	126	76	71	69	72	103	111	62	44	58	122
Mixed Paper #54 / ONP#6 ²												43	73	73	2	(18)	(4)	50
Corrugated (OCC)	114	95	80	131	111	68	149	173	133	131	131	127	152	221	128	84	117	171
Hardpack (OBB/OCC)	75	68	50	89	76	42	74	95	61	53	51	66	91	121	57	19	30	73
Boxboard (OBB)	62	53	41	70	62	26	61	84	62	46	48	50	50	na	na	na	na	na
Polycoat Containers	67	66	59	84	75	39	105	127	96	65	79	114	114	64	63	40	20	6
PET (mixed)	432	507	314	368	352	187	391	652	431	372	377	295	265	383	431	377	212	409
HDPE (mixed)	428	683	565	524	573	320	464	562	552	497	659	617	533	497	483	444	310	1138
Plastic Tubs & Lids	51	104	128	146	204	22	54	247	265	na	na	na	na	na	na	na	na	na
Mixed Plastics ³								48	32	38	46	58	61	32	47	74	82	228
Film Plastic	55	148	137	51	35	3	13	25	23	14	29	47	40	24	15	3	(21)	(4)
Aluminum Cans	1772	1763	2169	2065	1904	1215	1591	1790	1516	1523	1783	1548	1576	1772	1733	1354	1311	1841
Steel Cans	191	116	141	168	245	89	263	335	277	257	299	179	200	262	322	253	215	415
Glass (mixed)	(12)	(31)	(31)	(31)	(24)	(18)	(15)	(11)	(18)	(22)	(22)	(30)	(37)	(42)	(41)	(38)	(37)	(42)
Composite Index	131	124	111	145	150	80	124	169	118	107	117	105	129	154	118	90	82	176
Fibre Composite Index⁴												77	109	132	75	49	51	108
Container Composite Index⁵												188	184	217	239	205	160	329

Disclaimer: The CIF Price Sheet provides an estimate of the average commodity prices from a sample of municipalities located across Ontario. Please note the estimate in no way represents, reflects or captures all municipal conditions. You acknowledge that in using the CIF Price Sheet neither CIF, nor any of its agents, partners, affiliates, directors, employees, assigns and associates may be held liable, responsible or accountable for any type of damage, litigation or other legal action that may arise directly or indirectly from the reliance on the CIF Price Sheet.

Pricing Notes:

- Paper Stock Industries (PSI) have eliminated the ONP#8 grade specification. For continuity, the new PSI grade specification, Sorted Residential Paper (SRP #56), has been included as it most closely represents the ONP#8 commodity ON municipalities are producing.
- Paper Stock Industries (PSI) have eliminated the ONP#6 grade specification and added a new PSI grade specification, Mixed Paper #54. Mixed Paper has already been capture on the price sheet with the new grade number being added.
- The composition for mixed plastics varies from each municipality based on the range of materials accepted and the specifications from their end markets.
- The Fibre Composite Index is calculated using ONP#8 / SRP#56, Mixed Paper #54 / ONP#6, Corrugated (OCC), Hardpack (OBB/OCC), and Boxboard (OBB).
- Polycoat containers are included in the container composite index and NOT the fibre composite index.

General Notes:

- Prices are for baled post-consumer residential materials except glass, which is loose.
- As of May 2012, prices for all materials are FOB the municipality including glass. Prior to May 2012, prices for glass were delivered prices.
- The Composite Index is calculated using the overall composition of residential Blue Box material recovered and marketed in Ontario as reported from the approved 2019 RPRA (formerly WDO) Datacall with some additional allocations to material categories. Mixed glass includes coloured glass. Composition figures are updated annually. Details available upon request.
- Materials with a listed price of "NA" indicate either an insufficient number of municipalities reported a price in the given month (<4) or variation in the reported price which is not considered representative of Ontario.
- Prices are compiled from a range of municipal programs across Ontario combined with information from industry representatives. Prices may not be the same as actual prices being paid in any given program.
- "Price Range" reflects the second highest and lowest prices used in calculating the average (trim mean). The highest and lowest prices have been excluded to account for outliers/unique local conditions.

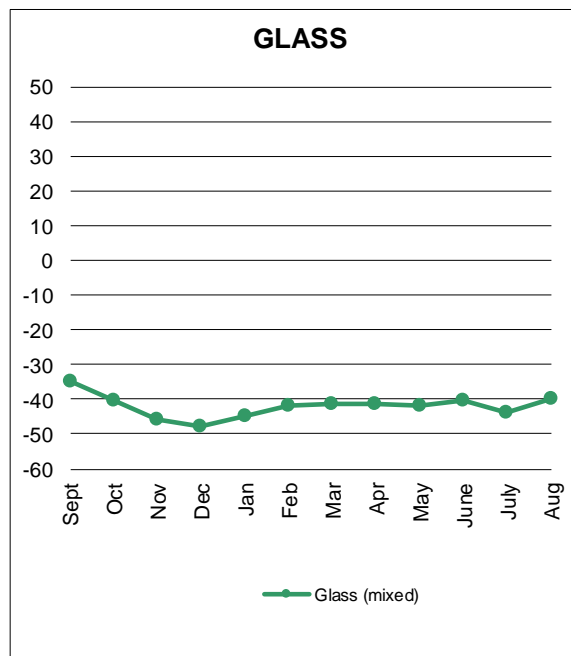
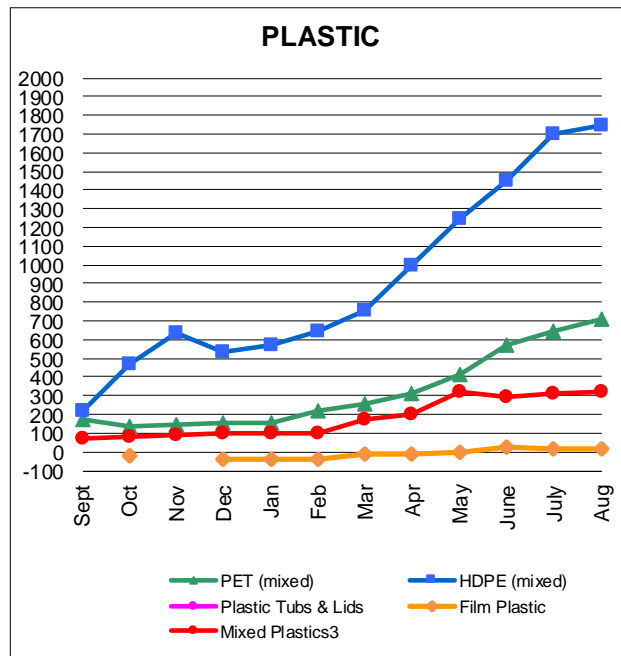
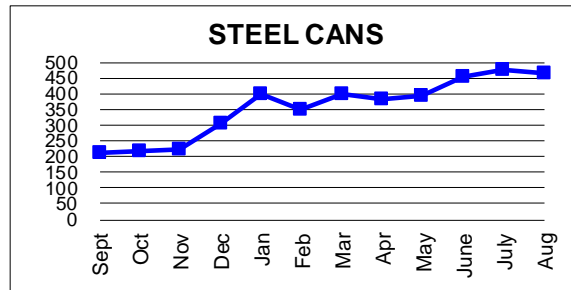
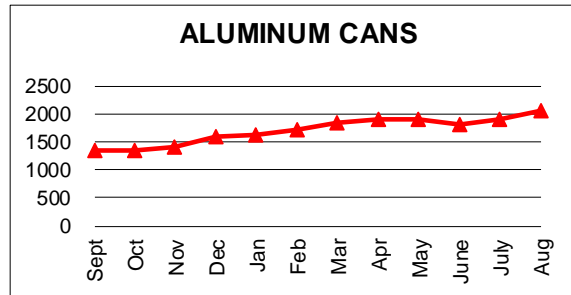
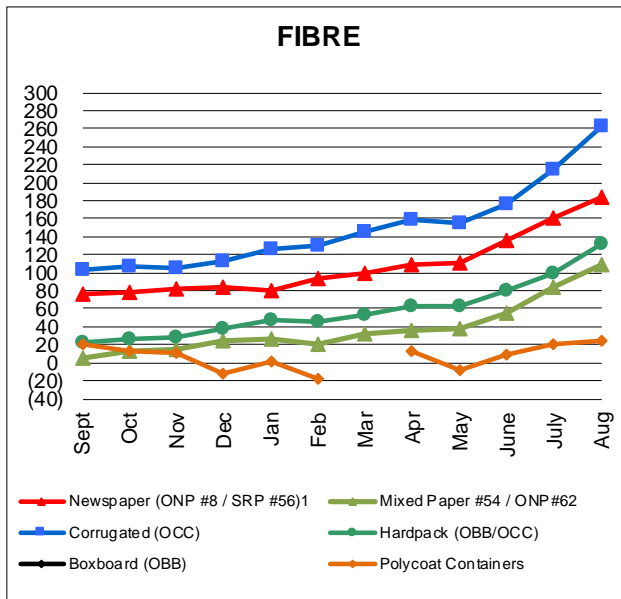
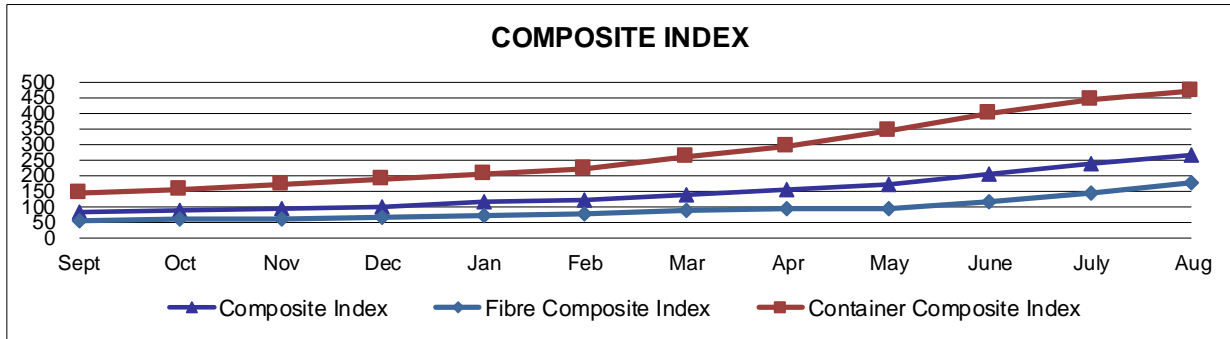
For more information:

Neil Menezes, EcoCompass Inc.
nmenezes@ecocompass.ca, 416-735-3674

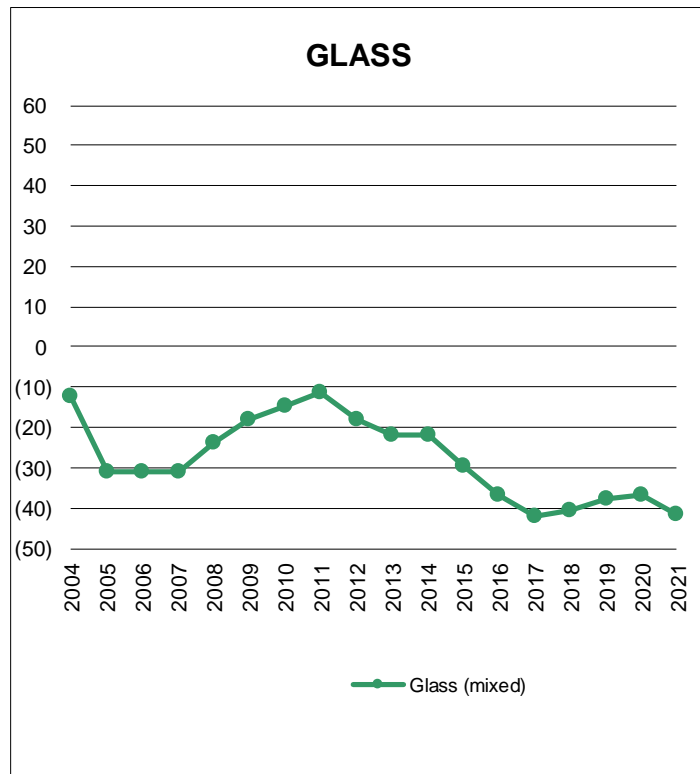
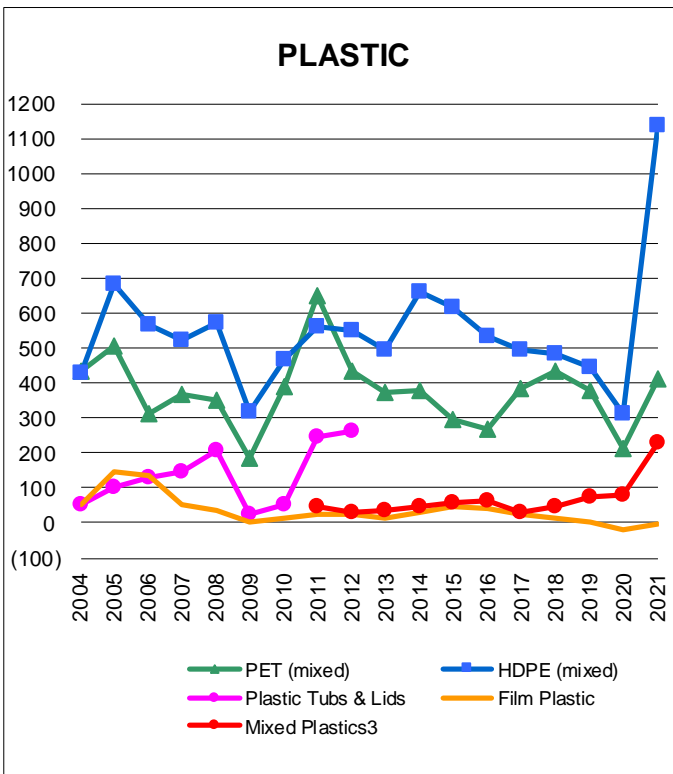
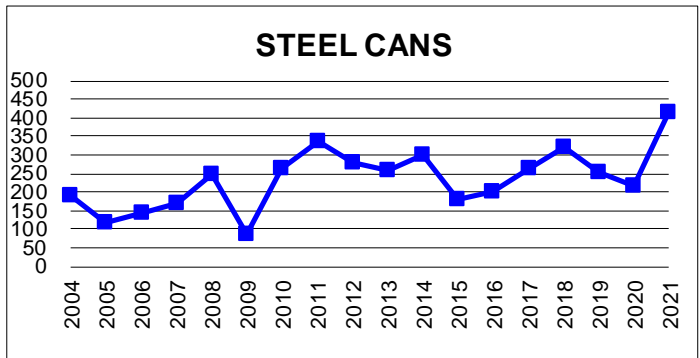
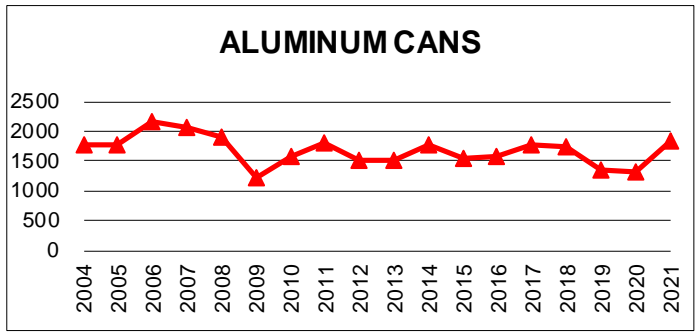
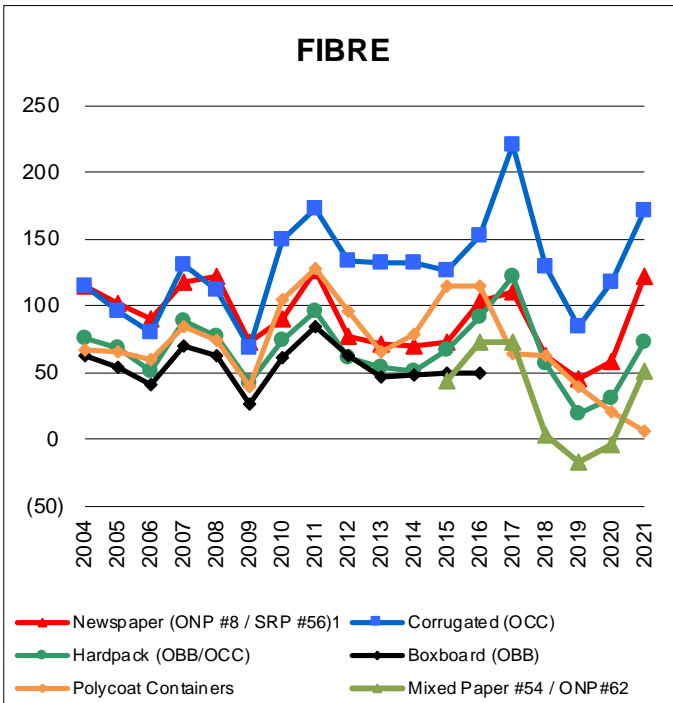
© CIF 2021

Produced for CIF by:





Graphs produced from Monthly Averages Table.



Graphs produced from Yearly Averages Table