

	MONTHLY AVERAGES (CDN\$/Metric Tonne)																	# of Muni. (Monthly Change)	Price Range (CDN/Metric Tonne)	
	Apr 2019	May 2019	June 2019	July 2019	Aug 2019	Sept 2019	Oct 2019	Nov 2019	Dec 2019	Jan 2020	Feb 2020	Mar 2020	Apr 2020	May 2020	June 2020	July 2020	Aug 2020			Sept 2020
Newspaper (ONP #8 / SRP #56) ¹	50	39	40	35	37	39	41	41	38	25	27	29	39	63	59	66	70	77	7 (1)	62 - 91
Mixed Paper #54 / ONP#6 ²	(1)	(9)	(16)	(22)	(28)	(30)	(22)	(20)	(35)	(36)	(34)	(35)	(5)	(4)	3	(1)	7	5	5 (-1)	(30) - 51
Corrugated (OCC)	96	80	72	70	73	72	69	65	66	65	72	99	163	220	141	107	107	103	10 (-1)	86 - 109
Hardpack (OBB/OCC)	29	12	6	10	10	11	10	9	8	8	3	18	56	73	38	23	25	23	6 (0)	(42) - 58
Boxboard (OBB)	na	na	na	na	na	na	na	na	na	na	na	na	na	na	na	na	na	na	2 (0)	na
Polycoat Containers	50	50	36	34	47	37	35	13	na	(10)	6	12	40	61	47	34	na	20	6 (4)	15 - 110
PET (mixed)	450	453	432	425	379	279	221	217	228	248	260	287	299	256	209	192	173	172	12 (-1)	79 - 238
HDPE (mixed)	480	437	435	411	349	324	426	479	505	461	360	298	158	148	154	140	150	220	13 (0)	175 - 280
Plastic Tubs & Lids	na	na	na	na	na	na	na	na	na	na	na	na	na	na	na	na	na	na	0 (-1)	na
Mixed Plastics ³	72	75	78	75	76	76	68	79	82	86	91	98	81	79	72	64	77	68	12 (1)	28 - 150
Film Plastic	4	na	0	0	0	(8)	(8)	na	na	na	(6)	na	(8)	(25)	na	(25)	na	na	4 (0)	(40) - 29
Aluminum Cans	1428	1431	1396	1363	1342	1326	1283	1295	1312	1314	1248	1309	1166	1193	1275	1249	1295	1349	12 (-1)	947 - 1476
Steel Cans	316	276	236	219	249	215	162	181	219	245	232	240	181	200	195	167	171	210	13 (1)	176 - 240
Glass (mixed)	(43)	(41)	(43)	(39)	(34)	(34)	(35)	(26)	(34)	(34)	(32)	(36)	(36)	(35)	(31)	(35)	(35)	(35)	8 (1)	(73) - 0
Composite Index	104	93	88	83	82	75	72	74	74	62	62	70	89	105	86	74	80			
Fibre Composite Index⁴	57	44	42	38	40	41	42	41	39	14	17	27	61	86	62	51	54	54		
Container Composite Index⁵	234	227	214	208	200	171	156	166	173	184	176	182	160	153	147	134	133	145		

	YEARLY AVERAGES (CDN\$/Metric Tonne)																			
	2003	2004	2005	2006	2007	2008	2009	2010	2011	2012	2013	2014	2015	2016	2017	2018	2019	2020		
Newspaper (ONP #8 / SRP #56) ¹	99	114	101	89	118	121	72	90	126	76	71	69	72	103	111	62	44	51		
Mixed Paper #54 / ONP#6 ²													43	73	73	2	(18)	(11)		
Corrugated (OCC)	89	114	95	80	131	111	68	149	173	133	131	131	127	152	221	128	84	120		
Hardpack (OBB/OCC)	62	75	68	50	89	76	42	74	95	61	53	51	66	91	121	57	19	30		
Boxboard (OBB)	43	62	53	41	70	62	26	61	84	62	46	48	50	50	na	na	na	na		
Polycoat Containers	64	67	66	59	84	75	39	105	127	96	65	79	114	114	64	63	40	26		
PET (mixed)	278	432	507	314	368	352	187	391	652	431	372	377	295	265	383	431	377	233		
HDPE (mixed)	364	428	683	565	524	573	320	464	562	552	497	659	617	533	497	483	444	232		
Plastic Tubs & Lids	12	51	104	128	146	204	22	54	247	265	na	na	na	na	na	na	na	na		
Mixed Plastics ³									48	32	38	46	58	61	32	47	74	79		
Film Plastic	8	55	148	137	51	35	3	13	25	23	14	29	47	40	24	15	3	(16)		
Aluminum Cans	1619	1772	1763	2169	2065	1904	1215	1591	1790	1516	1523	1783	1548	1576	1772	1733	1354	1266		
Steel Cans	76	191	116	141	168	245	89	263	335	277	257	299	179	200	262	322	253	204		
Glass (mixed)	(19)	(12)	(31)	(31)	(31)	(24)	(18)	(15)	(11)	(18)	(22)	(22)	(30)	(37)	(42)	(41)	(38)	(34)		
Composite Index	114	131	124	111	145	150	80	124	169	118	107	117	105	129	154	118	90	78		
Fibre Composite Index⁴													77	109	132	75	49	48		
Container Composite Index⁵													188	184	217	239	205	157		

Disclaimer: The CIF Price Sheet provides an estimate of the average commodity prices from a sample of municipalities located across Ontario. Please note the estimate in no way represents, reflects or captures all municipal conditions. You acknowledge that in using the CIF Price Sheet neither CIF, nor any of its agents, partners, affiliates, directors, employees, assigns and associates may be held liable, responsible or accountable for any type of damage, litigation or other legal action that may arise directly or indirectly from the reliance on the CIF Price Sheet.

Pricing Notes:

- Paper Stock Industries (PSI) have eliminated the ONP#8 grade specification. For continuity, the new PSI grade specification, Sorted Residential Paper (SRP #56), has been included as it most closely represents the ONP#8 commodity ON municipalities are producing.
- Paper Stock Industries (PSI) have eliminated the ONP#6 grade specification and added a new PSI grade specification, Mixed Paper #54. Mixed Paper has already been capture on the price sheet with the new grade number being added.
- The composition for mixed plastics varies from each municipality based on the range of materials accepted and the specifications from their end markets.
- The Fibre Composite Index is calculated using ONP#8 / SRP#56, Mixed Paper #54 / ONP#6, Corrugated (OCC), Hardpack (OBB/OCC), and Boxboard (OBB).
- Polycoat containers are included in the container composite index and NOT the fibre composite index.

General Notes:

- Prices are for baled post-consumer residential materials except glass, which is loose.
- As of May 2012, prices for all materials are FOB the municipality including glass. Prior to May 2012, prices for glass were delivered prices.
- The Composite Index is calculated using the overall composition of residential Blue Box material recovered and marketed in Ontario as reported from the approved 2018 RPRA (formerly WDO) Datacall with some additional allocations to material categories. Mixed glass includes coloured glass. Composition figures are updated annually. Details available upon request.
- Materials with a listed price of "NA" indicate either an insufficient number of municipalities reported a price in the given month (<4) or variation in the reported price which is not considered representative of Ontario.
- Prices are compiled from a range of municipal programs across Ontario combined with information from industry representatives. Prices may not be the same as actual prices being paid in any given program.
- "Price Range" reflects the second highest and lowest prices used in calculating the average (trim mean). The highest and lowest prices have been excluded to account for outliers/unique local conditions.

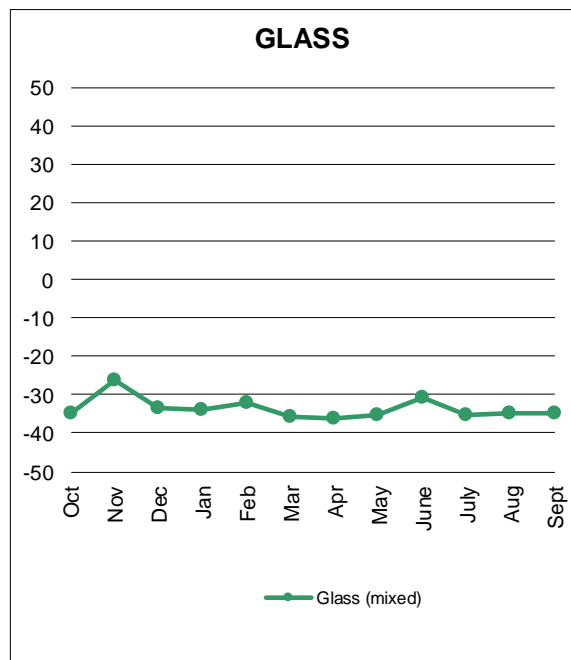
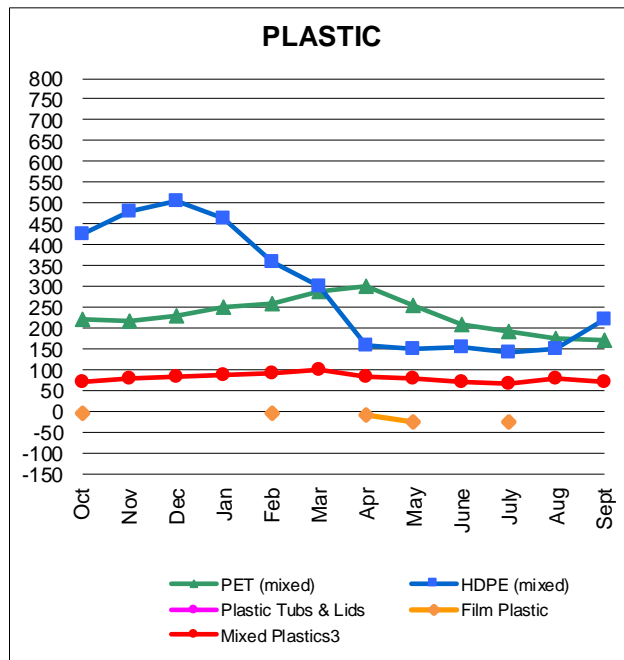
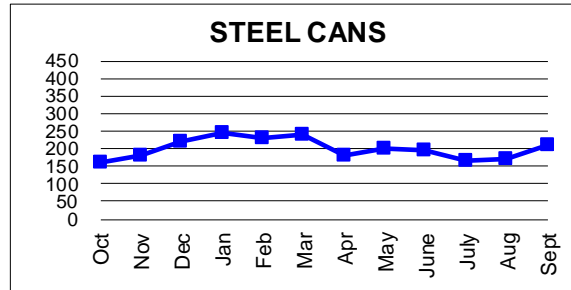
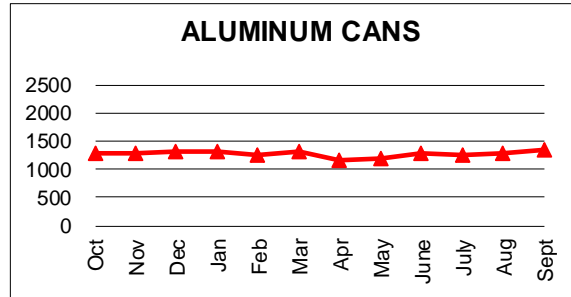
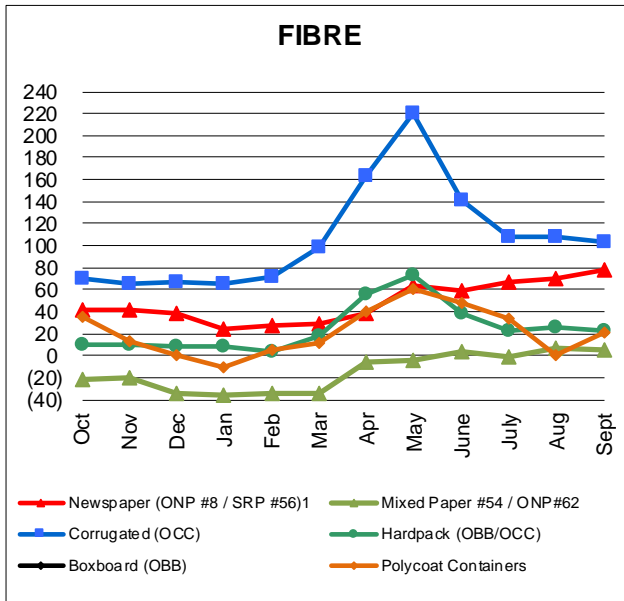
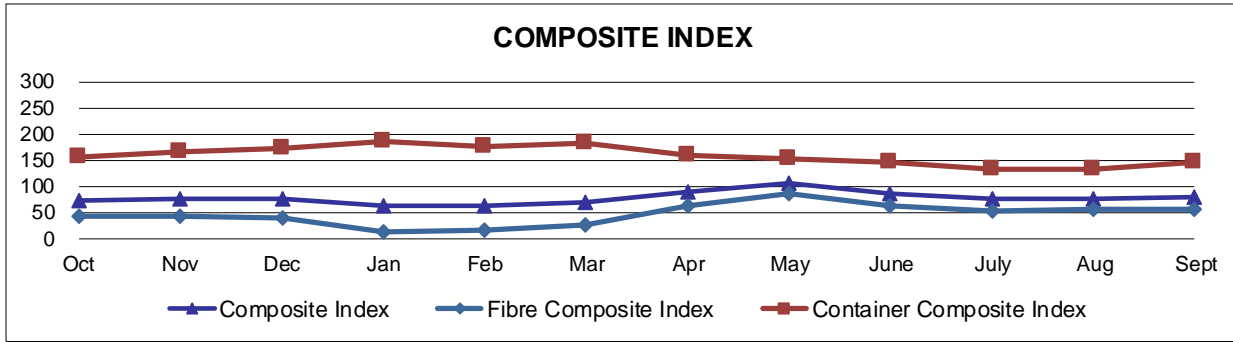
For more information:

Neil Menezes, EcoCompass Inc.
nmenezes@ecocompass.ca, 416-735-3674

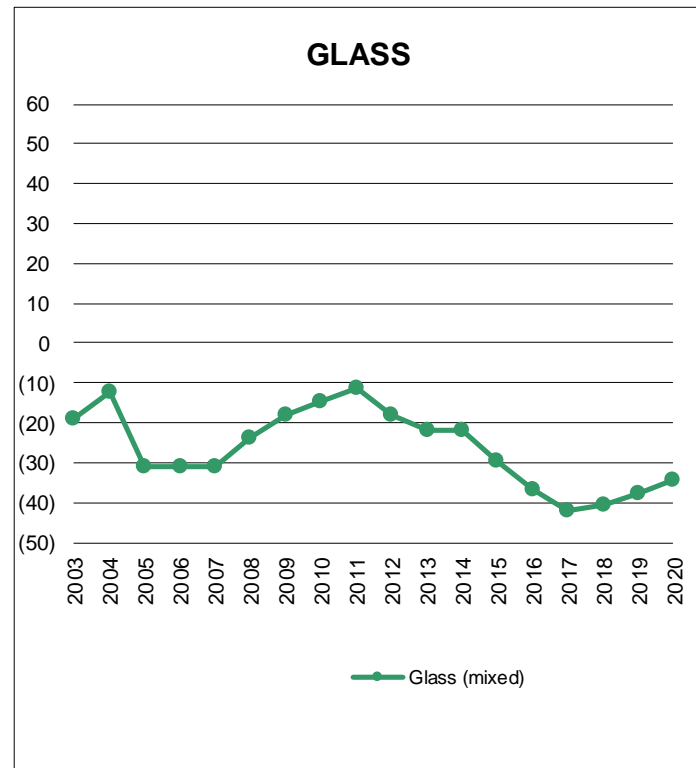
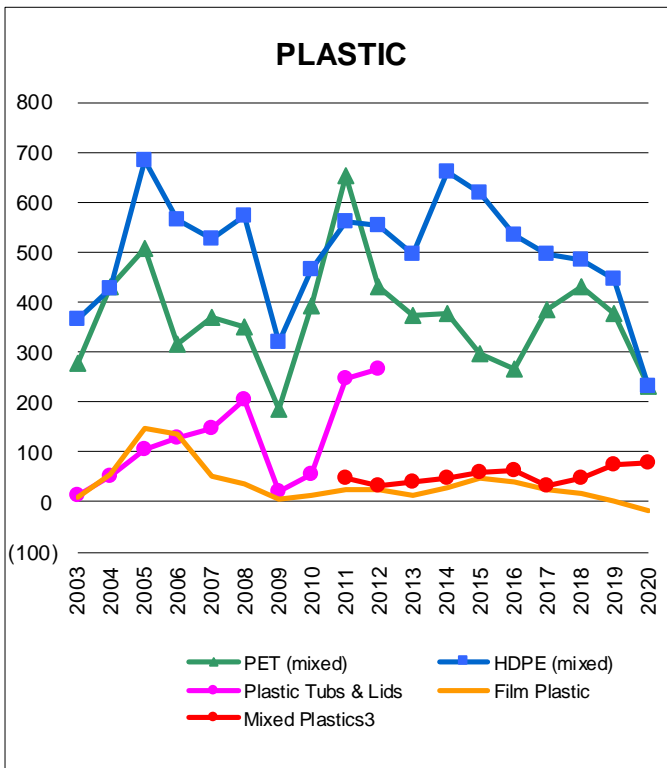
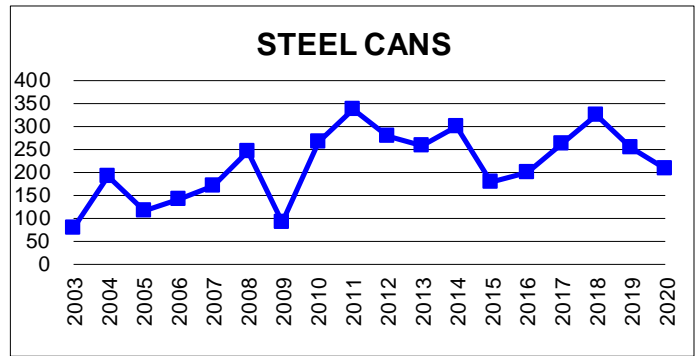
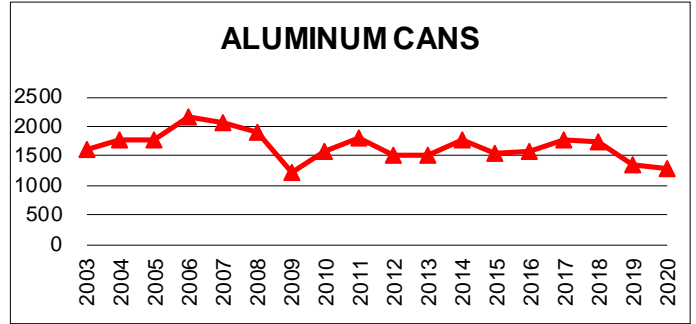
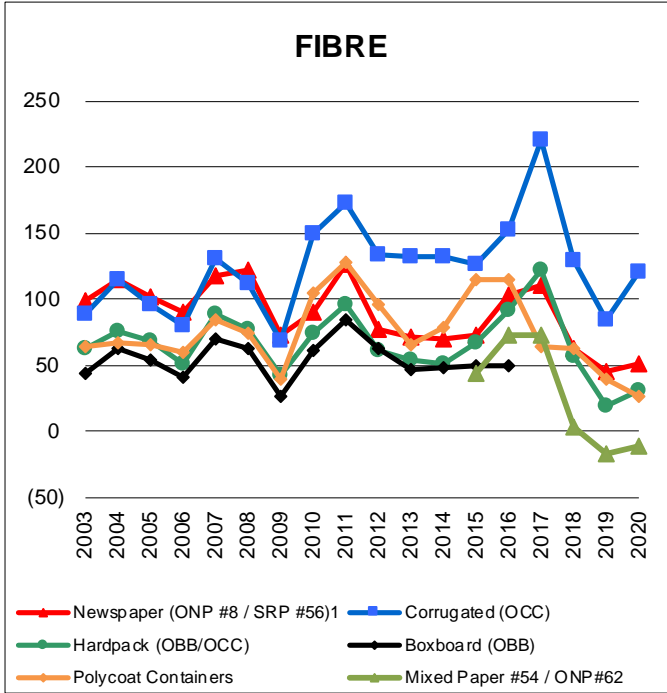
© CIF 2020

Produced for CIF by:





Graphs produced from Monthly Averages Table.



Graphs produced from Yearly Averages Table