



# Preparing collection systems for transition

Thursday, October 8, 2020

10:00 a.m. to 11:30 a.m.

# Panel 3 Moderator



**Laurie Westaway**  
**Project Manager**





# Preparing collection systems for transition

Thursday, October 8, 2020




10:00 a.m. to 11:30 a.m.

# Collection Systems for Transition

- Highlight transition projects
  - Collection shifts
  - Problematic material collection
  - Managing contamination

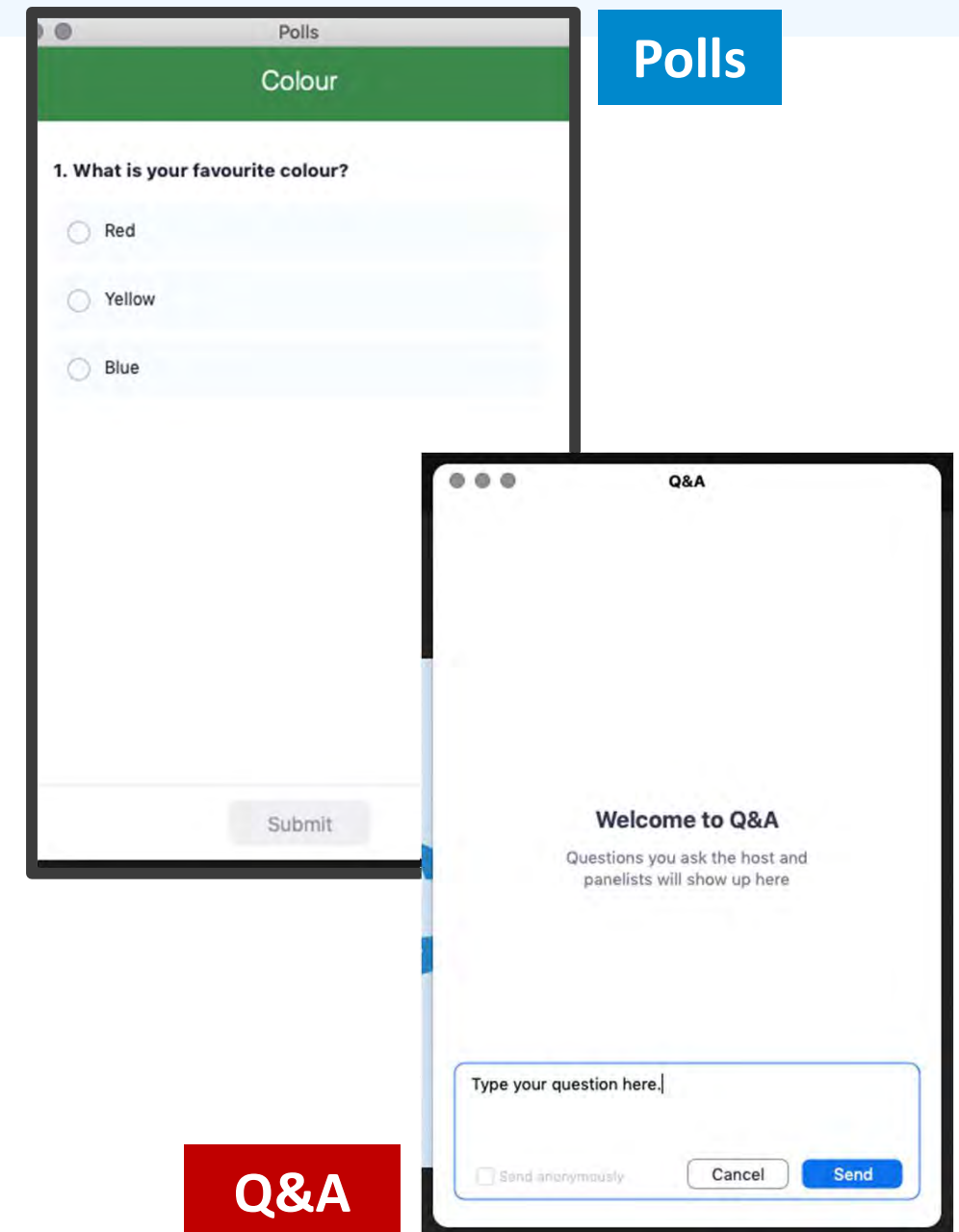


# Panelists

Alida Kusch	Dan Orr	Dane Rice	Melissa Kovacs Reid	Chris Fast	Cathie Green
					
Dillon Consulting	County of Northumberland	Second Wind Recycling	Dufferin County	Dufferin County	Drummond / North Elmsley

# Audience Participation

- Presentations were recorded in advance
- Submit questions anytime using the **Q&A icon** (bottom of your browser window)
- At the end of the panel, questions will be directed by the moderator to the speaker
- Respond to polls!



Audio Settings



Chat



Q&A

Leave

# Collection Policy Model: Special Report



**Alida Kusch**  
**Dillon Consulting Ltd.**

Model Run #	Policy Scenario Item	Policy Scenarios	Total Number of Trucks			
			Collection Vehicle #1	Collection Vehicle #2	Collection Vehicle #3	Collection Vehicle #4
<b>- Status Quo</b>			Garbage	Recyclables - Fibre - Black Box / Green Bin Organics	Recyclables - Containers - Blue Box / Green Bin Organics	Separately Collected L&Y
1	a	Status Quo	44	35	37	26
2	b	Bag and container limits	38	39	39	26
3	c	Pay as you throw	38	41	42	26
4	d	Containerized garbage	41	36	37	26
5	e	Clear bag garbage program	38	40	40	26
6	f	Material bans - Organics	38	40	41	26
7	g	Material bans - Recyclables	41	35	37	26
8	h	Material bans - Organics and Recyclables	38	41	42	26
<b>- Weekly Co-Collection of Blue/Black Box</b>			Garbage	Recyclables - Fibre - Black Box / Containers - Blue Box	Green Bin Organics / Separately Collected LYW	Separately Collected L&Y
9	a	Status Quo	43	57	53	26
10	b	Bag and container limits	38	57	57	26
11	c	Pay as you throw	38	57	60	26
12	d	Containerized garbage	40	57	54	26
13	e	Clear bag garbage program	38	57	58	26
14	f	Material bans - Organics	38	57	62	26

# CIF – Blue Box Transition Cost Models

Q in



Home | Centre of Excellence | Funding & Projects | Training & Events | News & Views | About

## Blue Box Transition

Centre of Excellence:

- COLLECTION**
- OPERATIONS**
- PROMOTION & EDUCATION**
- POLICY**

Blue Box Transition

- › Timeline and Glossary
- › Outreach
- › **Templates, Tools, Resources**

Waste Composition Studies

Waste Recycling Planning

**PROCUREMENT**

### Templates, Tools and Resources

Below is a compilation of the various templates, tools and resources that the CIF has developed in relation to transitioning the Blue Box program to Individual Producer Responsibility.

### Cost Models

#### Depot Costing Model

This model is designed to help plan costs to expand, construct and operate depots receiving under 500 tonnes/yr. of recyclables.

#### Small Municipality Full Cost Accounting Toolkit

This toolkit employs accounting inputs to create a full cost accounting of recycling programs. For more information, email Mike Birett.

#### Landfill Cost Model

This cost model is designed to help determine the cost allocation of recyclables entering/consuming available landfill capacity. The model calculates the present value of the costs required to establish, operate and conduct post-closure monitoring over the life of the landfill and allocate these costs on a densified volume basis.

#### Curbside Collection Cost Model

This ABC Tool was developed for a workshop in 2016. It is an excel spreadsheet designed to help estimate the full costs of capital, staffing and other resources required to provide curbside collection services. See also the [presentation](#) and [handouts](#) from the workshop. To update the worksheet or for more information please contact [Laurie Westaway](#).



# Curbside Glass: Video Journal



**Dan Orr,  
County of Northumberland**



# EPS Processing



**Dane Rice**  
**Second Wind Recycling**



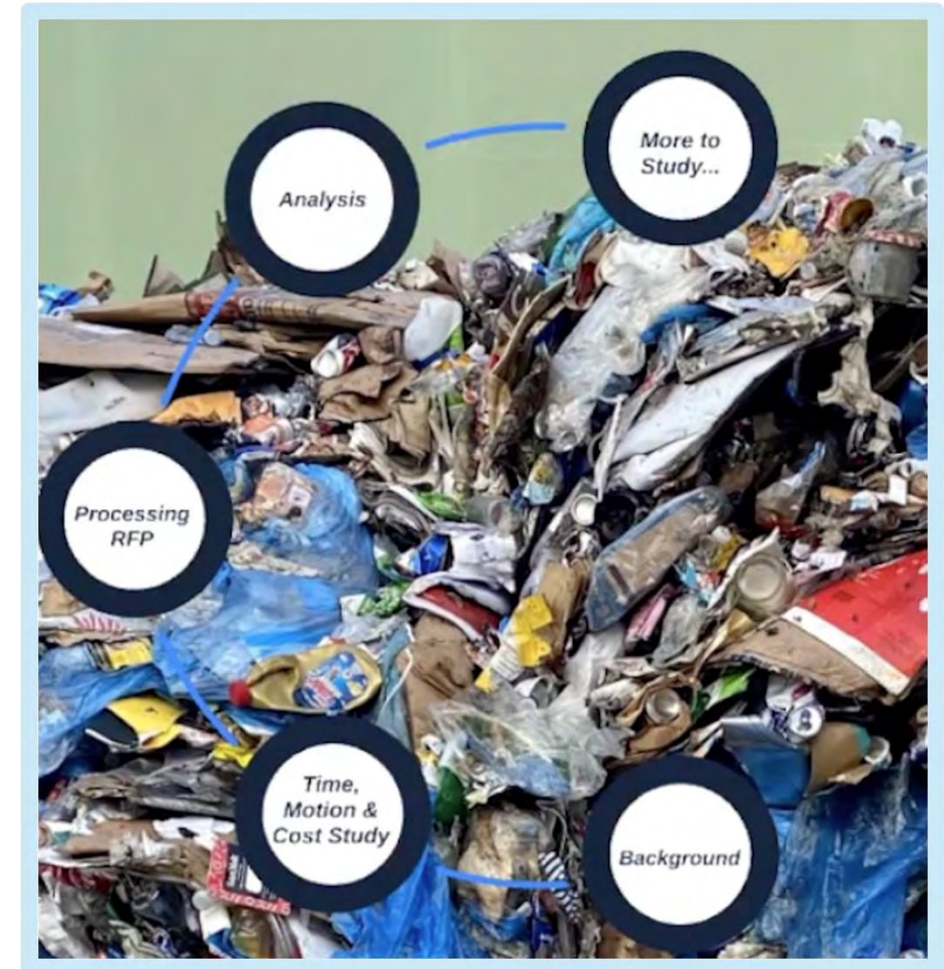
# Managing Bagged Material: Curbside vs. MRF



**Melissa Kovacs Reid**  
**Dufferin County**



**Chris Fast**  
**Dufferin County**



# A Tale of 2 Boxes



**Cathie Green**  
**Drummond/North Elmsley Township**

# Question time!

- Let's get into it!



## On Deck ...

### Panel 4: Ask an expert. Operational transition guidance from the pros

- Thursday, October 8, 2020
- 1:00 p.m. to 2:30 p.m.

## ORW 2020 Panel 3 Feedback: Preparing collection systems for transition

# Thank you!

We look forward to your feedback this panel. This survey will take about 2 minutes (or less) of your time. We will also be sending a broader event survey at the end of this year's ORW with questions about presentation content, panel formats and scheduling options.

## See you this afternoon...

1. Rate your overall experience of this panel: \*

Very Dissatisfied	Dissatisfied	Neutral	Satisfied	Very Satisfied
<input type="radio"/>	<input type="radio"/>	<input type="radio"/>	<input type="radio"/>	<input type="radio"/>