

	MONTHLY AVERAGES (CDN\$/Metric Tonne)																		# of Muni. (Monthly Change)	Price Range (CDN/Metric Tonne)
	Apr 2018	May 2018	June 2018	July 2018	Aug 2018	Sept 2018	Oct 2018	Nov 2018	Dec 2018	Jan 2019	Feb 2019	Mar 2019	Apr 2019	May 2019	June 2019	July 2019	Aug 2019	Sept 2019		
Newspaper (ONP #8 / SRP #56) ¹	54	48	49	55	64	54	61	54	57	61	55	56	50	39	40	35	37	39	6 (0)	12 - 72
Mixed Paper #54 / ONP#6 ²	2	(2)	(3)	(13)	(11)	(8)	(7)	(6)	(0)	(9)	(12)	(8)	(1)	(9)	(16)	(22)	(28)	(30)	5 (0)	(58) - 0
Corrugated (OCC)	130	120	119	120	121	118	120	119	122	128	111	109	96	80	72	70	73	72	10 (1)	61 - 78
Hardpack (OBB/OCC)	57	57	51	49	44	53	49	54	45	45	39	40	29	12	6	10	10	11	5 (0)	1 - 39
Boxboard (OBB)	na	na	na	na	na	na	na	na	na	na	na	na	na	na	na	na	na	na	3 (0)	na
Polycoat Containers	50	70	65	84	72	85	79	67	49	38	45	51	50	50	36	34	47	37	6 (1)	(15) - 80
PET (mixed)	390	416	455	475	486	469	479	462	479	485	482	468	450	453	432	425	379	279	12 (0)	160 - 401
HDPE (mixed)	531	527	469	435	468	461	492	492	523	514	498	471	480	437	435	411	349	324	11 (-1)	250 - 402
Plastic Tubs & Lids	na	na	na	na	na	na	na	na	na	na	na	na	na	na	na	na	na	na	2 (0)	na
Mixed Plastics ³	40	49	52	49	46	44	48	57	69	68	66	69	72	75	78	75	76	76	11 (0)	0 - 172
Film Plastic	14	18	18	15	18	15	16	13	15	15	14	11	4	na	0	0	0	(8)	6 (2)	(15) - 0
Aluminum Cans	1828	1994	2044	1923	1847	1643	1526	1388	1339	1328	1350	1398	1428	1431	1396	1363	1342	1326	12 (0)	1146 - 1436
Steel Cans	345	341	342	343	326	298	314	332	343	316	313	336	316	276	236	219	249	215	12 (0)	182 - 266
Glass (mixed)	(42)	(35)	(36)	(35)	(39)	(41)	(26)	(39)	(38)	(40)	(40)	(43)	(43)	(41)	(43)	(39)	(34)	(34)	6 (0)	(80) - 0
Composite Index	114	114	116	118	121	112	117	110	114	116	110	110	104	93	88	83	82	75		
Fibre Composite Index⁴	70	64	64	68	74	67	72	67	70	72	63	64	57	44	42	38	40	41		
Container Composite Index⁵	239	256	263	259	256	238	244	232	238	239	238	238	234	227	214	208	200	171		

	YEARLY AVERAGES (CDN\$/Metric Tonne)																		
	2002	2003	2004	2005	2006	2007	2008	2009	2010	2011	2012	2013	2014	2015	2016	2017	2018	2019	
Newspaper (ONP #8 / SRP #56) ¹	100	99	114	101	89	118	121	72	90	126	76	71	69	72	103	111	62	46	
Mixed Paper #54 / ONP#6 ²														43	73	73	2	(15)	
Corrugated (OCC)	106	89	114	95	80	131	111	68	149	173	133	131	131	127	152	221	128	90	
Hardpack (OBB/OCC)	63	62	75	68	50	89	76	42	74	95	61	53	51	66	91	121	57	22	
Boxboard (OBB)		43	62	53	41	70	62	26	61	84	62	46	48	50	50	na	na	na	
Polycoat Containers	58	64	67	66	59	84	75	39	105	127	96	65	79	114	114	64	63	43	
PET (mixed)	166	278	432	507	314	368	352	187	391	652	431	372	377	295	265	383	431	428	
HDPE (mixed)	233	364	428	683	565	524	573	320	464	562	552	497	659	617	533	497	483	436	
Plastic Tubs & Lids	0	12	51	104	128	146	204	22	54	247	265	na	na	na	na	na	na	na	
Mixed Plastics ³										48	32	38	46	58	61	32	47	73	
Film Plastic	0	8	55	148	137	51	35	3	13	25	23	14	29	47	40	24	15	5	
Aluminum Cans	1709	1619	1772	1763	2169	2065	1904	1215	1591	1790	1516	1523	1783	1548	1576	1772	1733	1374	
Steel Cans	47	76	191	116	141	168	245	89	263	335	277	257	299	179	200	262	322	275	
Glass (mixed)	(15)	(19)	(12)	(31)	(31)	(31)	(24)	(18)	(15)	(11)	(18)	(22)	(22)	(30)	(37)	(42)	(41)	(40)	
Composite Index	113	114	131	124	111	145	150	80	124	169	118	107	117	105	129	154	118	96	
Fibre Composite Index⁴														77	109	132	75	51	
Container Composite Index⁵														188	184	217	239	219	

Disclaimer: The CIF Price Sheet provides an estimate of the average commodity prices from a sample of municipalities located across Ontario. Please note the estimate in no way represents, reflects or captures all municipal conditions. You acknowledge that in using the CIF Price Sheet neither CIF, nor any of its agents, partners, affiliates, directors, employees, assigns and associates may be held liable, responsible or accountable for any type of damage, litigation or other legal action that may arise directly or indirectly from the reliance on the CIF Price Sheet.

Pricing Notes:

- Paper Stock Industries (PSI) have eliminated the ONP#8 grade specification. For continuity, the new PSI grade specification, Sorted Residential Paper (SRP #56), has been included as it most closely represents the ONP#8 commodity ON municipalities are producing.
- Paper Stock Industries (PSI) have eliminated the ONP#6 grade specification and added a new PSI grade specification, Mixed Paper #54. Mixed Paper has already been captured on the price sheet with the new grade number being added.
- The composition for mixed plastics varies from each municipality based on the range of materials accepted and the specifications from their end markets.
- The Fibre Composite Index is calculated using ONP#8 / SRP#56, Mixed Paper #54 / ONP#6, Corrugated (OCC), Hardpack (OBB/OCC), and Boxboard (OBB).
- Polycoat containers are included in the container composite index and NOT the fibre composite index.

General Notes:

- Prices are for baled post-consumer residential materials except glass, which is loose.
- As of May 2012, prices for all materials are FOB the municipality including glass. Prior to May 2012, prices for glass were delivered prices.
- The Composite Index is calculated using the overall composition of residential Blue Box material recovered and marketed in Ontario as reported from the approved 2017 RPRA (formerly WDO) Datacall with some additional allocations to material categories. Mixed glass includes coloured glass. Composition figures are updated annually. Details available upon request.
- Materials with a listed price of "NA" indicate either an insufficient number of municipalities reported a price in the given month (<4) or variation in the reported price which is not considered representative of Ontario.
- Prices are compiled from a range of municipal programs across Ontario combined with information from industry representatives. Prices may not be the same as actual prices being paid in any given program.
- "Price Range" reflects the second highest and lowest prices used in calculating the average (trim mean). The highest and lowest prices have been excluded to account for outliers/unique local conditions.

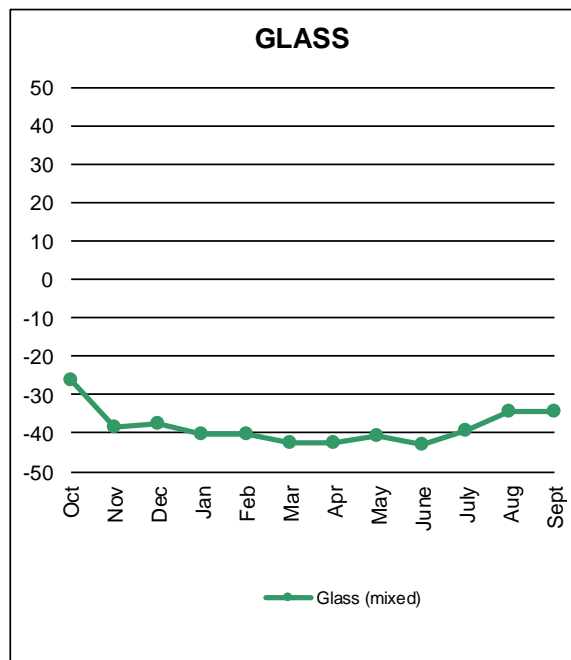
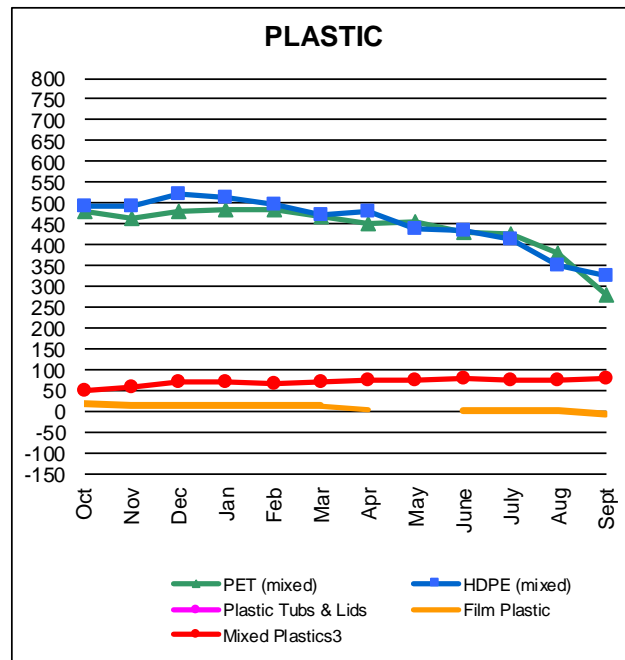
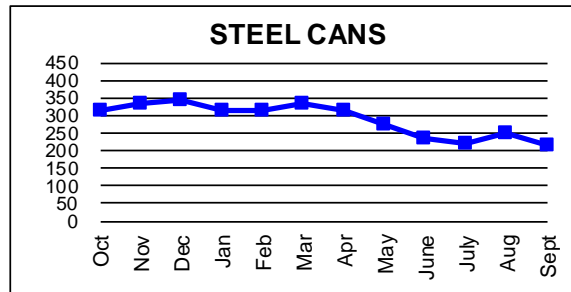
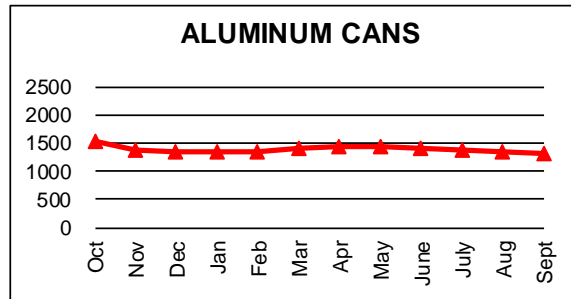
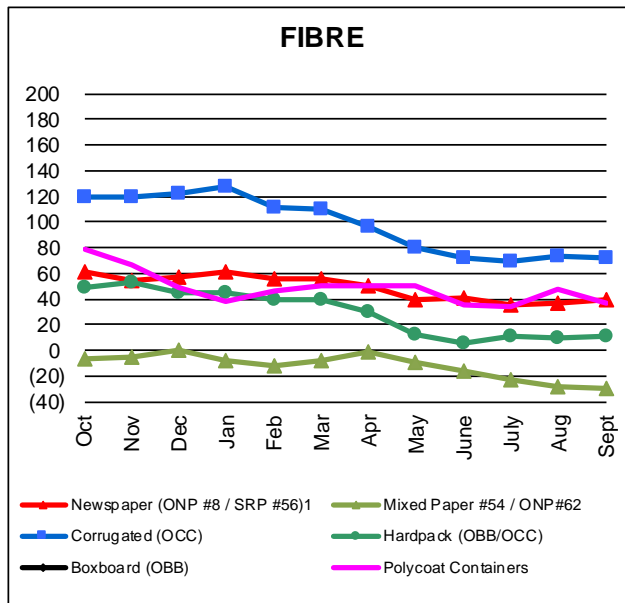
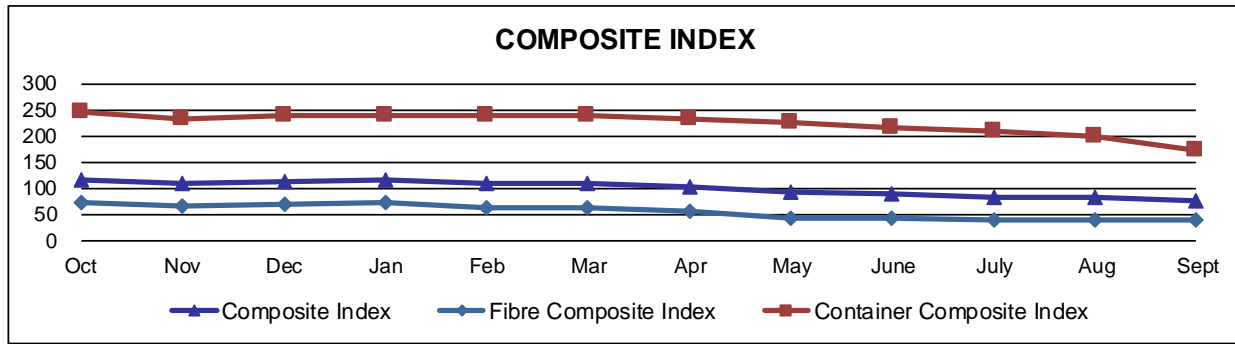
For more information:

Neil Menezes, EcoCompass Inc.
nmenezes@ecocompass.ca, 416-735-3674

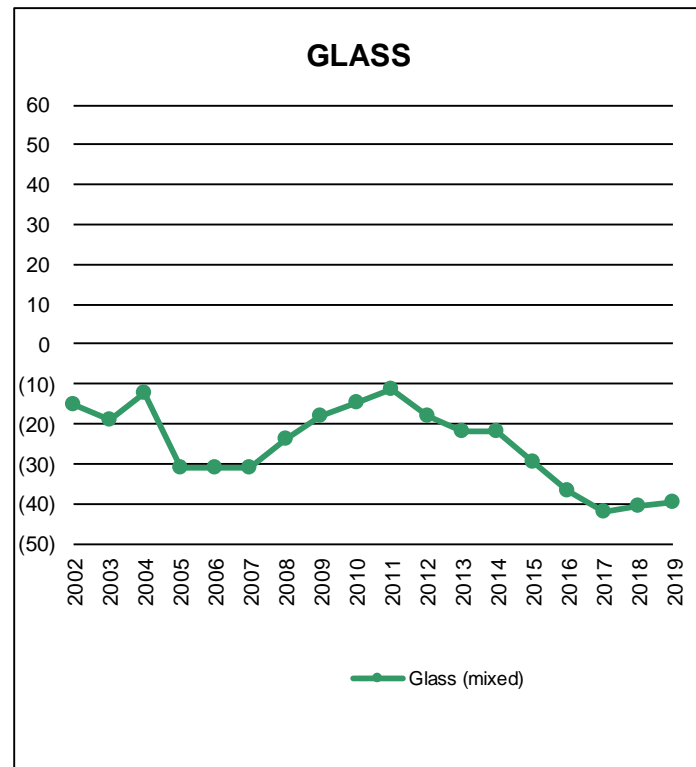
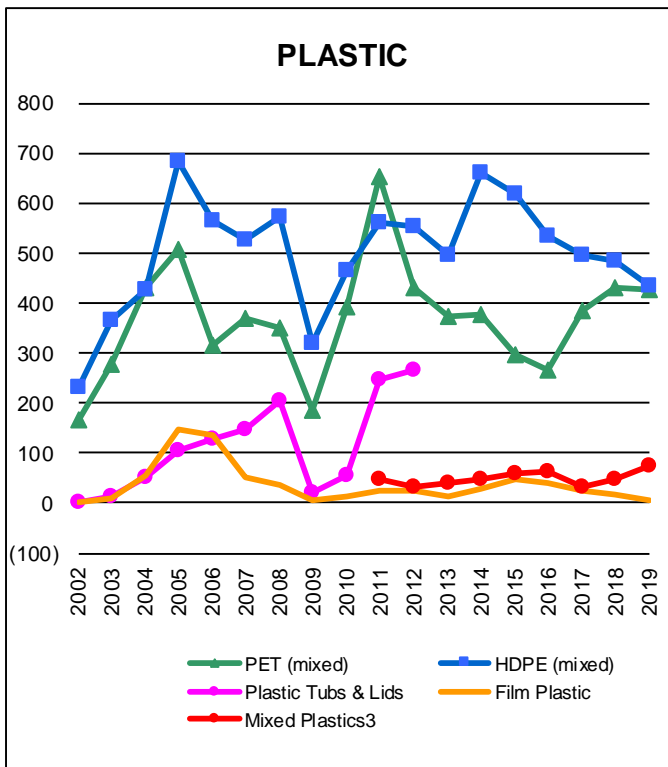
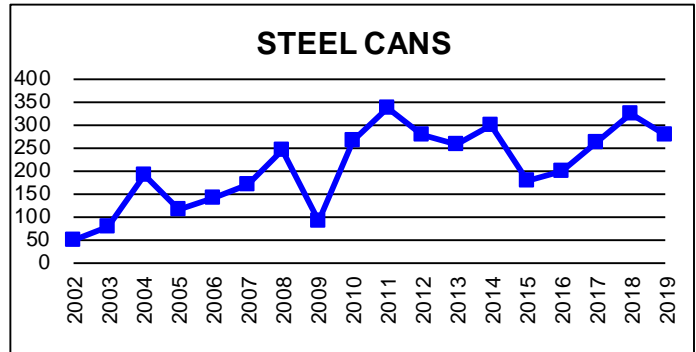
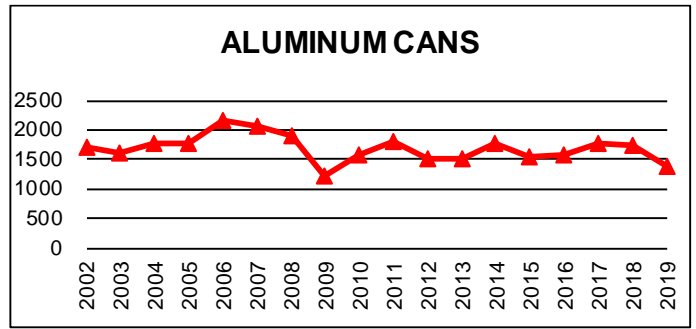
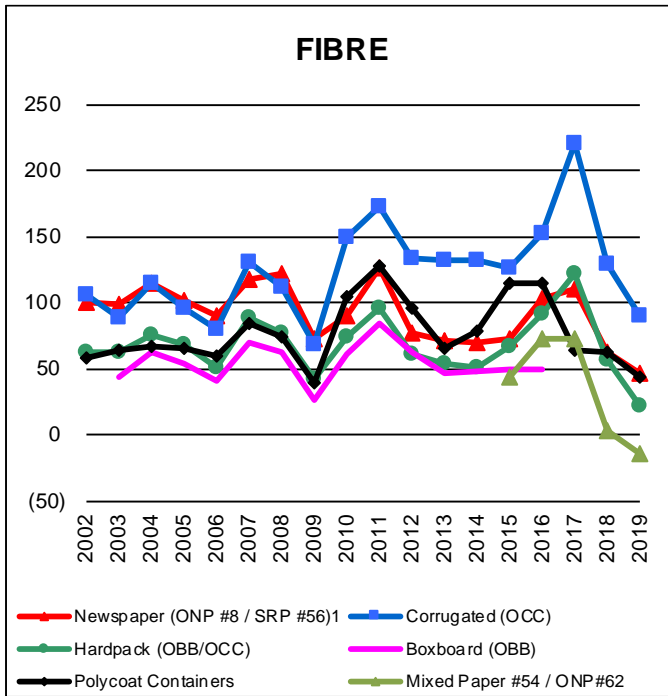
© CIF 2019

Produced for CIF by:





Graphs produced from Monthly Averages Table.



Graphs produced from Yearly Averages Table