

	MONTHLY AVERAGES (CDN\$/Metric Tonne)																		# of Muni. (Monthly Change)
	Mar 2017	Apr 2017	May 2017	June 2017	July 2017	Aug 2017	Sept 2017	Oct 2017	Nov 2017	Dec 2017	Jan 2018	Feb 2018	Mar 2018	Apr 2018	May 2018	June 2018	July 2018	Aug 2018	
Newspaper (ONP #8 / SRP #56) <sup>1</sup>	154	119	96	112	129	122	111	84	83	85	88	83	72	54	48	49	55	64	6 (-1)
Mixed Paper #54 / ONP#6 <sup>2</sup>	130	80	62	83	96	89	75	33	29	36	33	25	18	2	(2)	(3)	(13)	(11)	5 (-1)
Corrugated (OCC)	281	255	235	249	262	255	243	161	163	165	160	147	147	130	120	119	120	121	11 (1)
Hardpack (OBB/OCC)	166	135	na	136	155	153	143	78	81	73	86	65	74	57	57	51	49	44	6 (2)
Boxboard (OBB)	na	na	na	na	na	na	na	na	na	na	na	na	na	na	na	na	na	na	3 (0)
Polycoat Containers	110	94	102	61	43	49	29	35	53	38	45	46	42	50	70	65	84	72	9 (1)
PET (mixed)	324	359	391	439	444	452	440	396	352	352	342	351	373	390	416	455	475	486	12 (-1)
HDPE (mixed)	615	631	541	439	419	444	446	489	530	472	434	464	496	531	527	469	435	468	11 (-2)
Plastic Tubs & Lids	na	na	na	na	na	na	na	na	na	na	na	na	na	na	na	na	na	na	2 (0)
Mixed Plastics <sup>3</sup>	44	39	38	34	35	32	24	24	21	25	30	39	43	40	49	52	49	46	12 (0)
Film Plastic	26	24	21	33	37	32	18	13	20	19	11	15	16	14	18	18	15	18	6 (1)
Aluminum Cans	1909	1877	1819	1721	1666	1729	1751	1809	1791	1681	1723	1756	1788	1828	1994	2044	1923	1847	11 (0)
Steel Cans	297	279	288	275	263	262	254	228	232	258	283	280	320	345	341	342	343	326	13 (0)
Glass (mixed)	(38)	(38)	(36)	(44)	(41)	(42)	(42)	(43)	(43)	(50)	(53)	(56)	(49)	(42)	(35)	(36)	(35)	(39)	7 (0)
<b>Composite Index</b>	<b>192</b>	<b>169</b>	<b>152</b>	<b>161</b>	<b>172</b>	<b>168</b>	<b>159</b>	<b>128</b>	<b>126</b>	<b>126</b>	<b>129</b>	<b>125</b>	<b>124</b>	<b>114</b>	<b>114</b>	<b>116</b>	<b>118</b>	<b>121</b>	
<b>Fibre Composite Index<sup>4</sup></b>	<b>179</b>	<b>146</b>	<b>124</b>	<b>139</b>	<b>155</b>	<b>148</b>	<b>137</b>	<b>98</b>	<b>97</b>	<b>99</b>	<b>103</b>	<b>95</b>	<b>87</b>	<b>70</b>	<b>64</b>	<b>64</b>	<b>68</b>	<b>74</b>	
<b>Container Composite Index<sup>5</sup></b>	<b>229</b>	<b>232</b>	<b>231</b>	<b>223</b>	<b>220</b>	<b>225</b>	<b>221</b>	<b>214</b>	<b>208</b>	<b>200</b>	<b>205</b>	<b>210</b>	<b>226</b>	<b>239</b>	<b>256</b>	<b>263</b>	<b>259</b>	<b>256</b>	

	YEARLY AVERAGES (CDN\$/Metric Tonne)																	
	2001	2002	2003	2004	2005	2006	2007	2008	2009	2010	2011	2012	2013	2014	2015	2016	2017	2018
Newspaper (ONP #8 / SRP #56) <sup>1</sup>	76	100	99	114	101	89	118	121	72	90	126	76	71	69	72	103	111	64
Mixed Paper #54 / ONP#6 <sup>2</sup>															43	73	73	6
Corrugated (OCC)	55	106	89	114	95	80	131	111	68	149	173	133	131	131	127	152	221	133
Hardpack (OBB/OCC)	38	63	62	75	68	50	89	76	42	74	95	61	53	51	66	91	121	60
Boxboard (OBB)			43	62	53	41	70	62	26	61	84	62	46	48	50	50	na	na
Polycoat Containers	57	58	64	67	66	59	84	75	39	105	127	96	65	79	114	114	64	59
PET (mixed)	324	166	278	432	507	314	368	352	187	391	652	431	372	377	295	265	383	411
HDPE (mixed)	257	233	364	428	683	565	524	573	320	464	562	552	497	659	617	533	497	478
Plastic Tubs & Lids	5	0	12	51	104	128	146	204	22	54	247	265	na	na	na	na	na	na
Mixed Plastics <sup>3</sup>											48	32	38	46	58	61	32	43
Film Plastic	26	0	8	55	148	137	51	35	3	13	25	23	14	29	47	40	24	16
Aluminum Cans	1700	1709	1619	1772	1763	2169	2065	1904	1215	1591	1790	1516	1523	1783	1548	1576	1772	1863
Steel Cans	26	47	76	191	116	141	168	245	89	263	335	277	257	299	179	200	262	322
Glass (mixed)	(15)	(15)	(19)	(12)	(31)	(31)	(31)	(24)	(18)	(15)	(11)	(18)	(22)	(22)	(30)	(37)	(42)	(43)
<b>Composite Index</b>	<b>95</b>	<b>113</b>	<b>114</b>	<b>131</b>	<b>124</b>	<b>111</b>	<b>145</b>	<b>150</b>	<b>80</b>	<b>124</b>	<b>169</b>	<b>118</b>	<b>107</b>	<b>117</b>	<b>105</b>	<b>129</b>	<b>154</b>	<b>120</b>
<b>Fibre Composite Index<sup>4</sup></b>															<b>77</b>	<b>109</b>	<b>132</b>	<b>78</b>
<b>Container Composite Index<sup>5</sup></b>															<b>188</b>	<b>184</b>	<b>217</b>	<b>239</b>

Disclaimer: The CIF Price Sheet represents the average commodity prices received across Ontario based on a sample number of municipalities. It may not be representative of local municipal conditions.

**Pricing Notes:**

- Paper Stock Industries (PSI) have eliminated the ONP#8 grade specification. For continuity, the new PSI grade specification, Sorted Residential Paper (SRP #56), has been included as it most closely represents the ONP#8 commodity ON municipalities are producing.
- Paper Stock Industries (PSI) have eliminated the ONP#6 grade specification and added a new PSI grade specification, Mixed Paper #54. Mixed Paper has already been capture on the price sheet with the new grade number being added.
- The composition for mixed plastics varies from each municipality based on the range of materials accepted and the specifications from their end markets.
- The Fibre Composite Index is calculated using ONP#8 / SRP#56, Mixed Paper #54 / ONP#6, Corrugated (OCC), Hardpack (OBB/OCC), and Boxboard (OBB).
- Polycoat containers are included in the container composite index and NOT the fibre composite index.

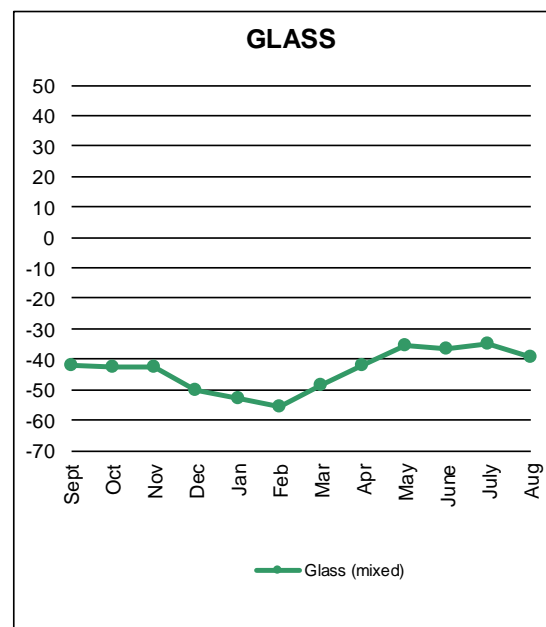
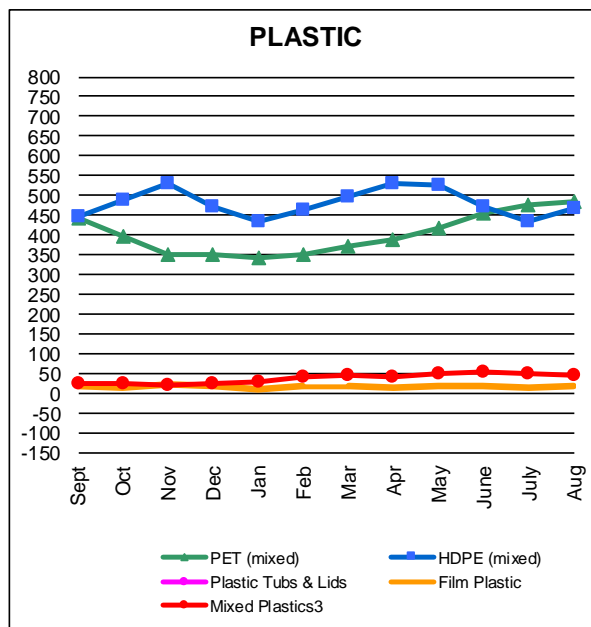
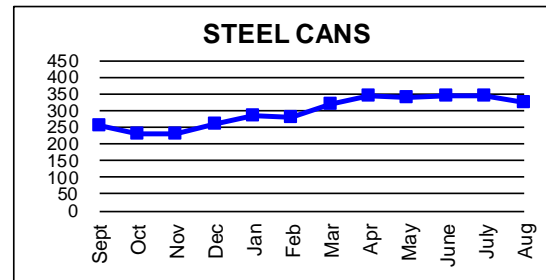
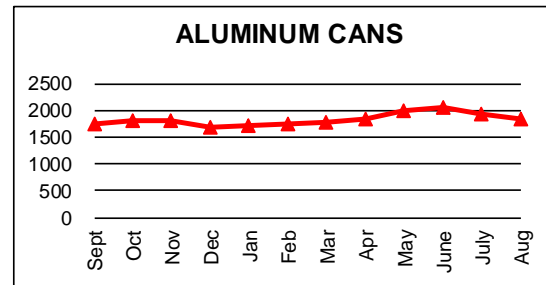
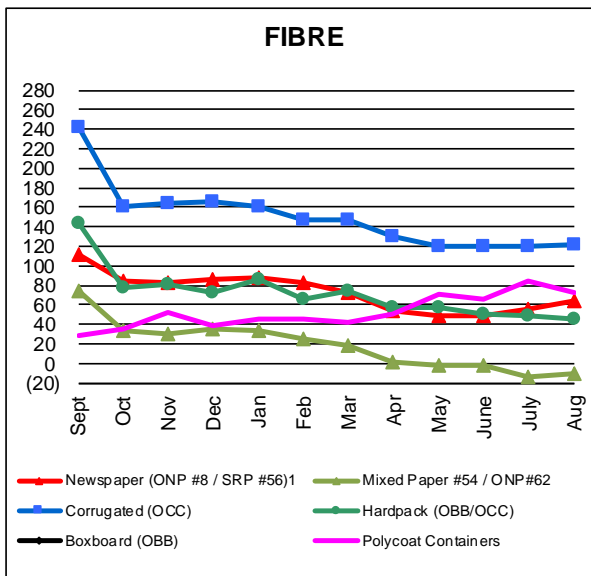
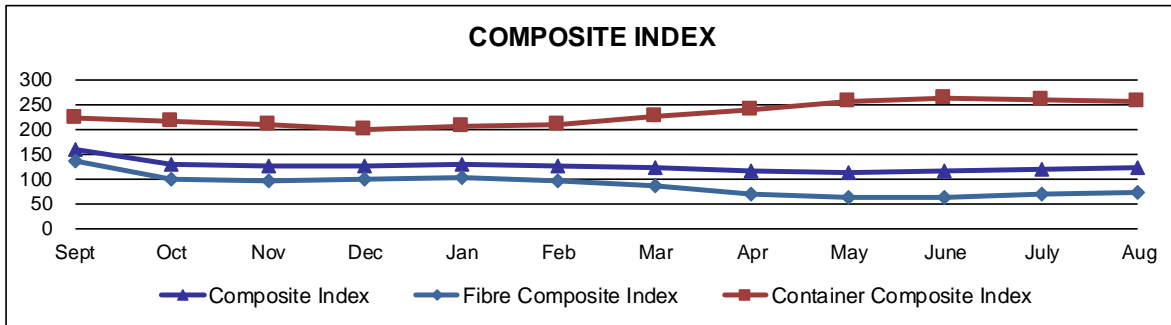
**General Notes:**

- Prices are for baled post-consumer residential materials except glass, which is loose.
- As of May 2012, prices for all materials are FOB the municipality including glass. Prior to May 2012, prices for glass were delivered prices.
- The Composite Index is calculated using the overall composition of residential Blue Box material recovered and marketed in Ontario as reported from the approved 2016 RPRA (formerly WDO) Datacall with some additional allocations to material categories. Mixed glass includes coloured glass. Composition figures are updated annually. Details available upon request.
- Materials with a listed price of "NA" indicate either an insufficient number of municipalities reported a price in the given month (<4) or variation in the reported price which is not considered representative of Ontario.
- Prices are compiled from a range of municipal programs across Ontario combined with information from industry representatives. Prices may not be the same as actual prices being paid in any given program.

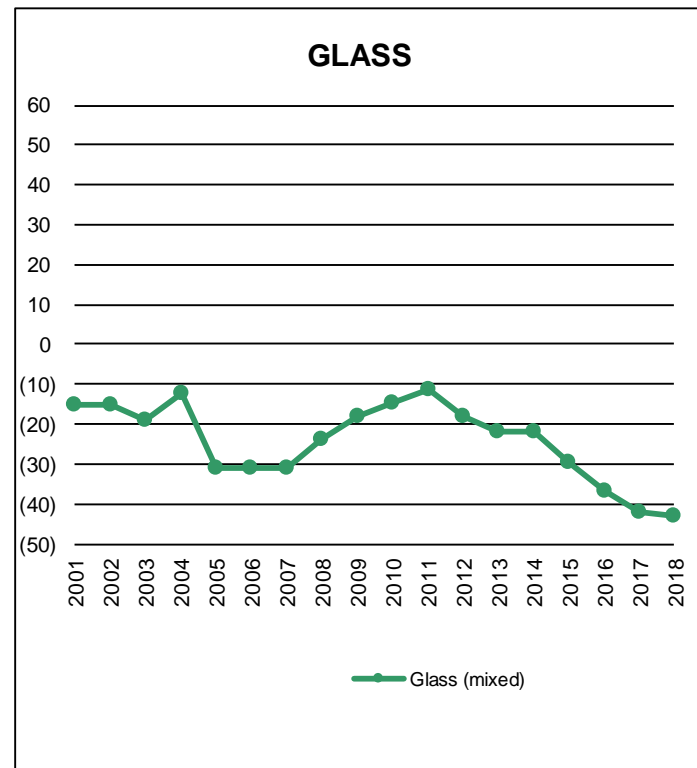
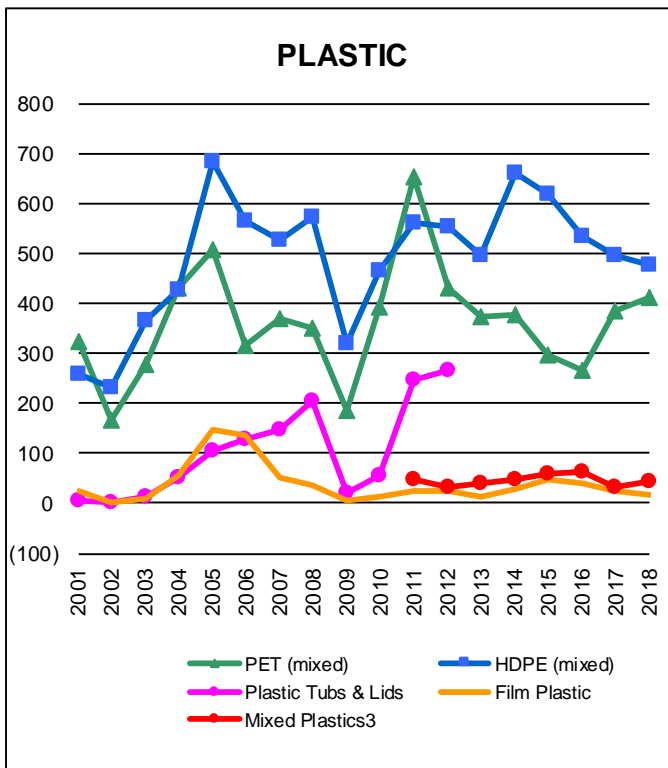
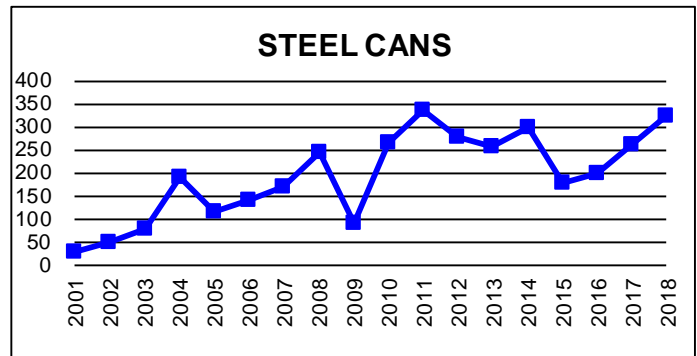
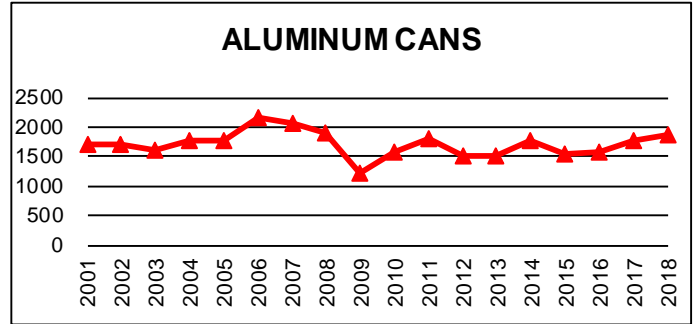
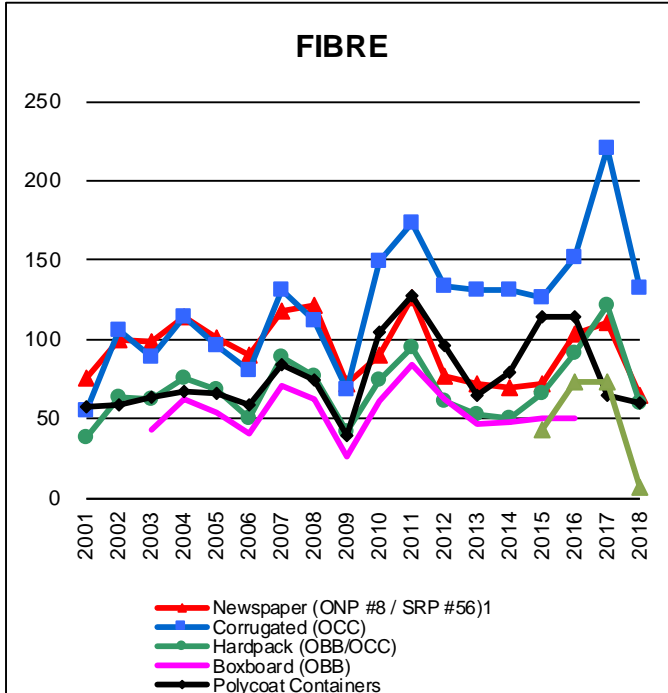
For more information:

Neil Menezes, Reclay StewardEdge  
[nmenezes@reclaystewardedge.com](mailto:nmenezes@reclaystewardedge.com), 416-644-8349

© CIF 2018



Graphs produced from Monthly Averages Table.



Graphs produced from Yearly Averages Table