

Price Sheet

Ontario Market Price Trends for January 2015

MONTHLY AVERAGES (CDN\$/Metric Tonne)																		
	Aug 2013	Sept 2013	Oct 2013	Nov 2013	Dec 2013	Jan 2014	Feb 2014	Mar 2014	Apr 2014	May 2014	June 2014	July 2014	Aug 2014	Sept 2014	Oct 2014	Nov 2014	Dec 2014	Jan 2015
Newspaper (ONP #8)	64	65	67	68	67	69	71	72	71	71	69	69	69	68	70	67	62	64
Mixed Paper / ONP#6	na	na	na	na	na	na	na	na	na	na	na	na	na	na	na	na	na	37
Corrugated (OCC)	135	140	141	141	131	133	140	156	141	140	134	131	127	119	121	117	117	118
Hardpack (OBB/OCC)	46	53	51	52	48	49	53	60	53	53	51	50	51	46	48	47	47	51
Boxboard (OBB)	44	49	49	45	46	48	50	48	49	49	48	46	46	47	43	48	52	43
Polycoat Containers	65	67	67	61	59	61	64	72	78	79	77	76	84	85	88	87	95	93
PET (mixed)	375	372	340	339	340	348	386	433	441	458	361	336	323	342	346	355	393	368
HDPE (mixed)	391	400	441	535	582	597	683	715	662	603	610	609	571	673	764	716	698	571
Plastic Tubs & Lids	na	na	na	na	na	na	na	na	na	na	na	na	na	na	na	na	na	na
Mixed Plastics*	34	33	40	37	34	35	39	44	41	49	49	46	47	49	47	53	52	48
Film Plastic	10	8	6	7	15	12	12	12	21	28	32	30	30	30	50	38	53	38
Aluminum Cans	1519	1481	1481	1487	1485	1556	1663	1747	1782	1794	1758	1813	1831	1840	1852	1840	1924	1877
Steel Cans	242	242	247	275	301	324	302	294	305	313	305	310	310	311	296	264	251	265
Glass (mixed)	(22)	(22)	(22)	(22)	(22)	(22)	(22)	(22)	(22)	(22)	(22)	(22)	(22)	(22)	(22)	(22)	(22)	(22)
Composite Index	101	102	103	106	106	112	118	125	122	122	116	115	114	115	118	114	113	108
Fibre Composite Index⁶																		69
Container Composite Index⁷																		226

YEARLY AVERAGES (CDN\$/Metric Tonne)																		
	1998	1999	2000	2001	2002	2003	2004	2005	2006	2007	2008	2009	2010	2011	2012	2013	2014	2015
Newspaper (ONP8)	48	76	118	76	100	99	114	101	89	118	121	72	90	126	76	71	69	64
Mixed Paper / ONP#6																		37
Corrugated (OCC)	73	99	112	55	106	89	114	95	80	131	111	68	149	173	133	131	131	118
Hardpack (OBB/OCC)	17	20	65	38	63	62	75	68	50	89	76	42	74	95	61	53	51	51
Boxboard (OBB)						43	62	53	41	70	62	26	61	84	62	46	48	43
Polycoat Containers	26	24	83	57	58	64	67	66	59	84	75	39	105	127	96	65	79	93
PET (mixed)	300	144	326	324	166	278	432	507	314	368	352	187	391	652	431	372	377	368
HDPE (mixed)	226	211	373	257	233	364	428	683	565	524	573	320	464	562	552	497	659	571
Plastic Tubs & Lids	66	3	5	5	0	12	51	104	128	146	204	22	54	247	265	na	na	na
Mixed Plastics*														48	32	38	46	48
Film Plastic	(5)	(12)	7	26	0	8	55	148	137	51	35	3	13	25	23	14	29	38
Aluminum Cans	1595	1608	1893	1700	1709	1619	1772	1763	2169	2065	1904	1215	1591	1790	1516	1523	1783	1877
Steel Cans			52	26	47	76	191	116	141	168	245	89	263	335	277	257	299	265
Glass (mixed)	(25)	(20)	(15)	(15)	(15)	(19)	(12)	(31)	(31)	(31)	(24)	(18)	(15)	(11)	(18)	(22)	(22)	(22)
Composite Index			134	95	113	114	131	124	111	145	150	80	124	169	118	107	117	108
Fibre Composite Index⁶																		69
Container Composite Index⁷																		226

* The composition for mixed plastics varies from each municipality based on the range of materials accepted and the specifications from their end markets.

Notes:

- Prices are for baled post-consumer residential materials, except glass, which is loose.
- As of May 2012, prices for all materials are FOB the municipality including glass. Prior to May 2012, prices for glass
- Prices are compiled from a range of municipal programs across Ontario combined with information from industry representatives. Prices may not be the same as actual prices being paid in any given program.
- The Composite Index is calculated using the overall composition of residential Blue Box material recovered and marketed in Ontario as reported from the approved 2013 WDO Datacall with some additional allocations to material categories. Mixed glass includes coloured glass. Composition figures are updated annually. Details available upon request.
- Materials with a listed price of "na" indicate either an insufficient number of municipalities reported a price in the given month (<4) or variation in the reported price which is not considered representative of Ontario
- The Fibre Composite Index is calculated using ONP#8, Mixed Paper / ONP#6, Corrugated (OCC), Hardpack (OBB/OCC), and Boxboard (OBB).
- Polycoat containers are included in the container composite index and NOT the fibre composite index.

This Project has been delivered with the assistance of the Continuous Improvement Fund.



This Project is Produced by Reclay StewardEdge

For more information please contact:

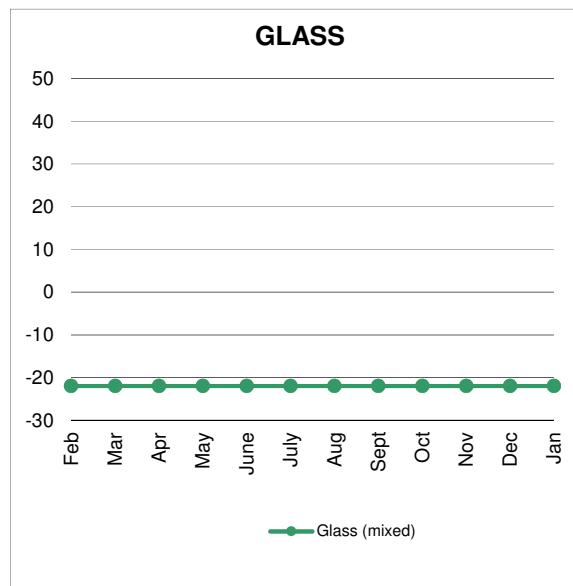
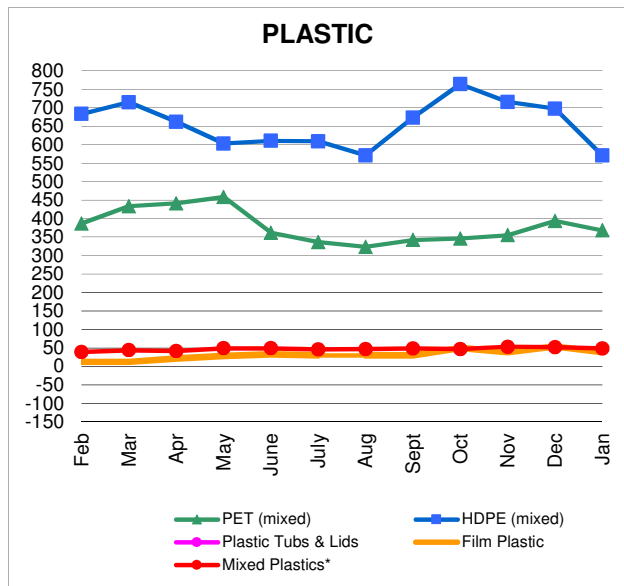
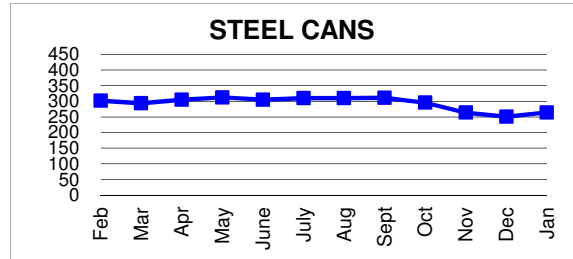
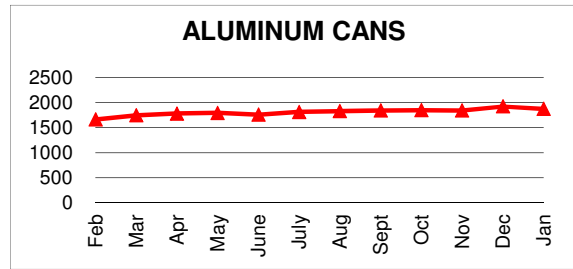
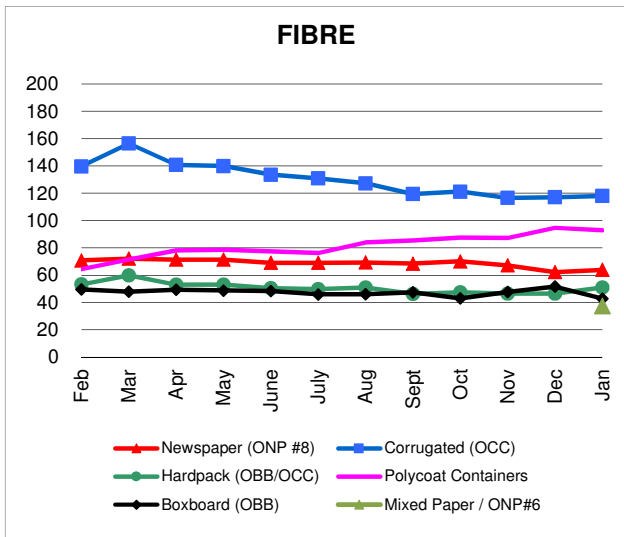
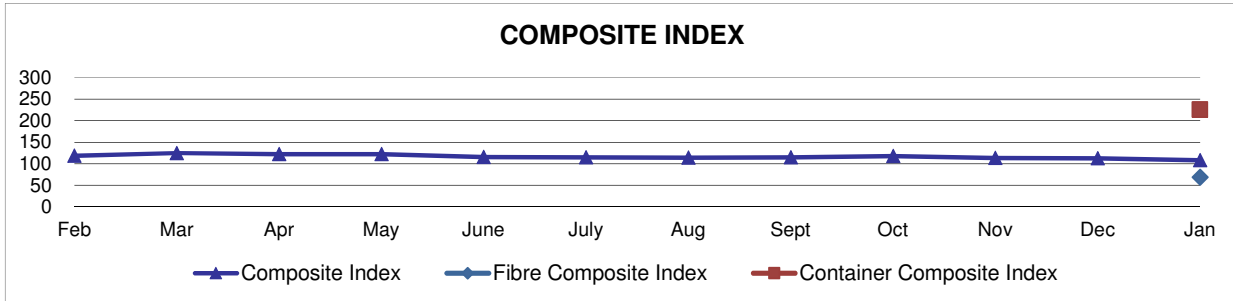
Neil Menezes at 416-644-8349 (Toll-Free: 888-277-2762, Ext. 3989) email: nmenezes@reclaystewardedge.com

Reclay StewardEdge, 26 Wellington Street East, Suite 601, Toronto, Ontario, M5E 1S2

Past editions of *The Price Sheet* are archived on the Reclay StewardEdge website at: <http://reclaystewardedge.com/resources/rse-ontario-price-sheet/>

Price Sheet

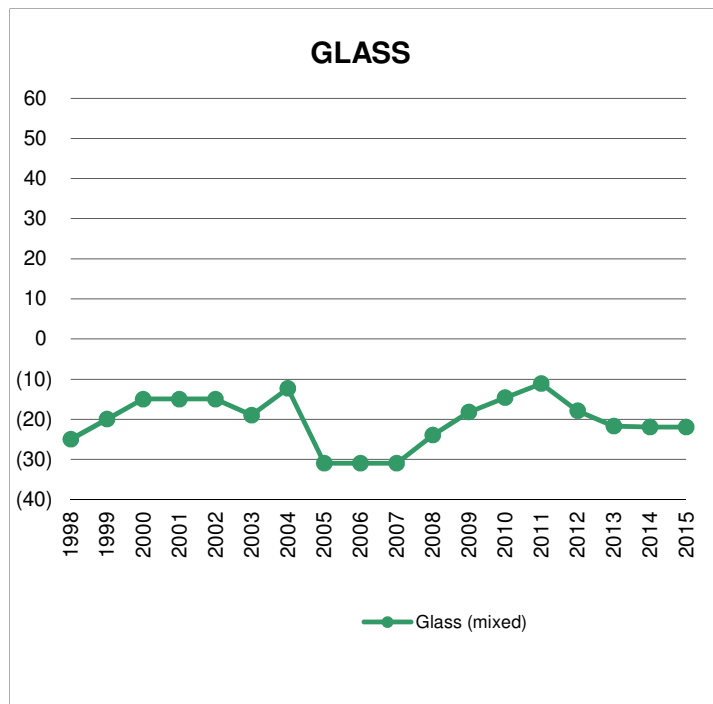
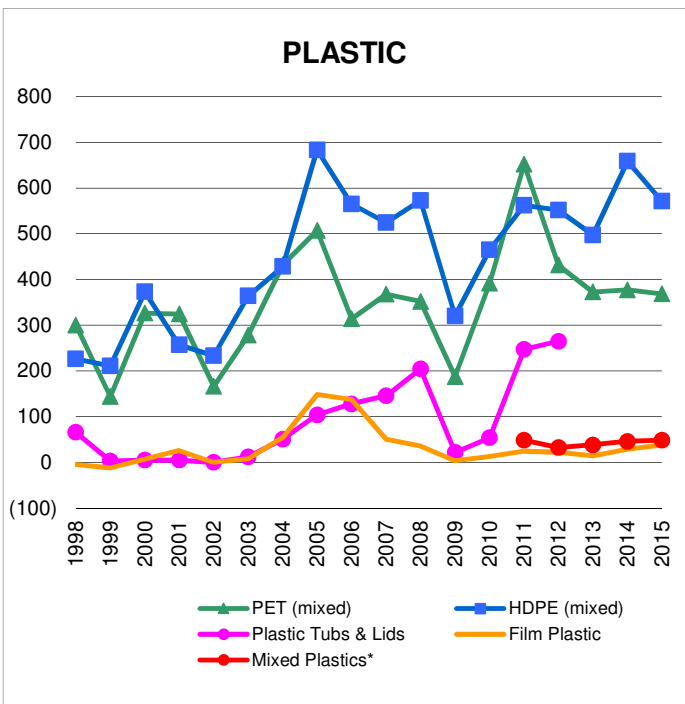
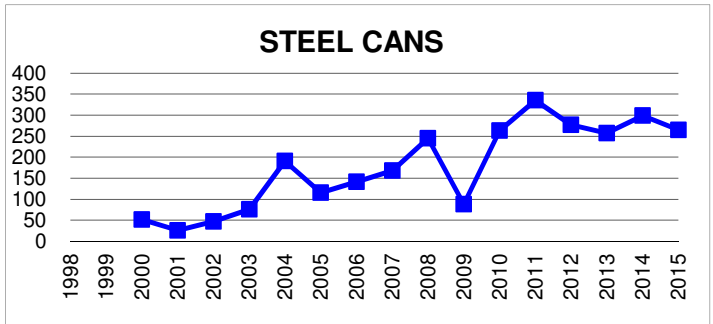
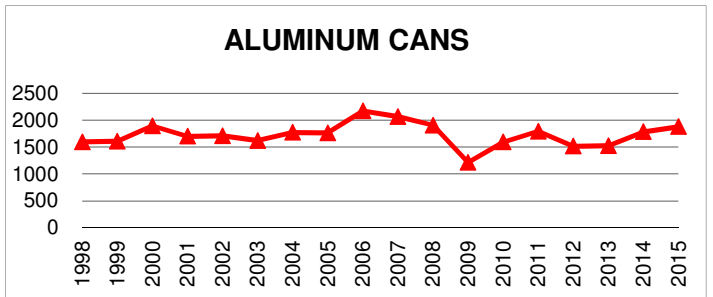
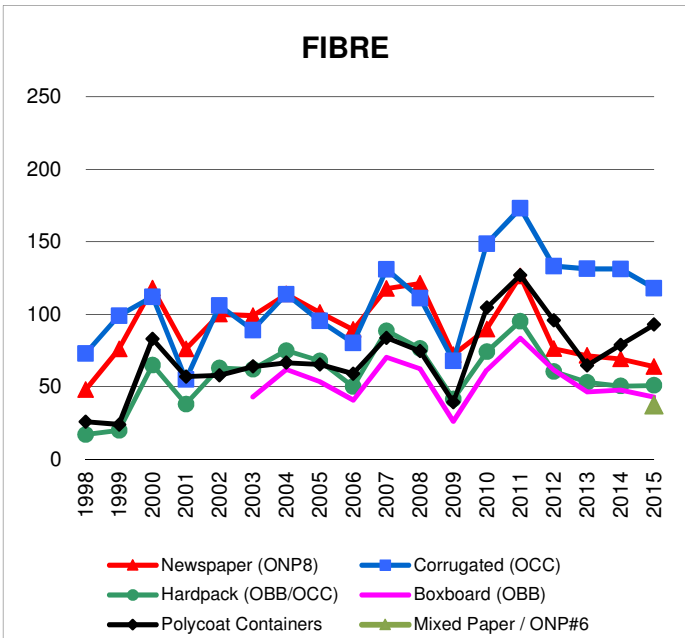
Ontario Monthly Averages from February 2014 to January 2015
(CDN\$/Metric Tonne)



Graphs produced from Monthly Averages Table.

Price Sheet

Ontario Historical Yearly Averages (CDN\$/Metric Tonne)



Graphs produced from Yearly Averages Table