



PROJECT SUMMARY REPORT

DEPARTMENT: Public Works & Environmental Services
DATE PREPARED: July 7, 2011

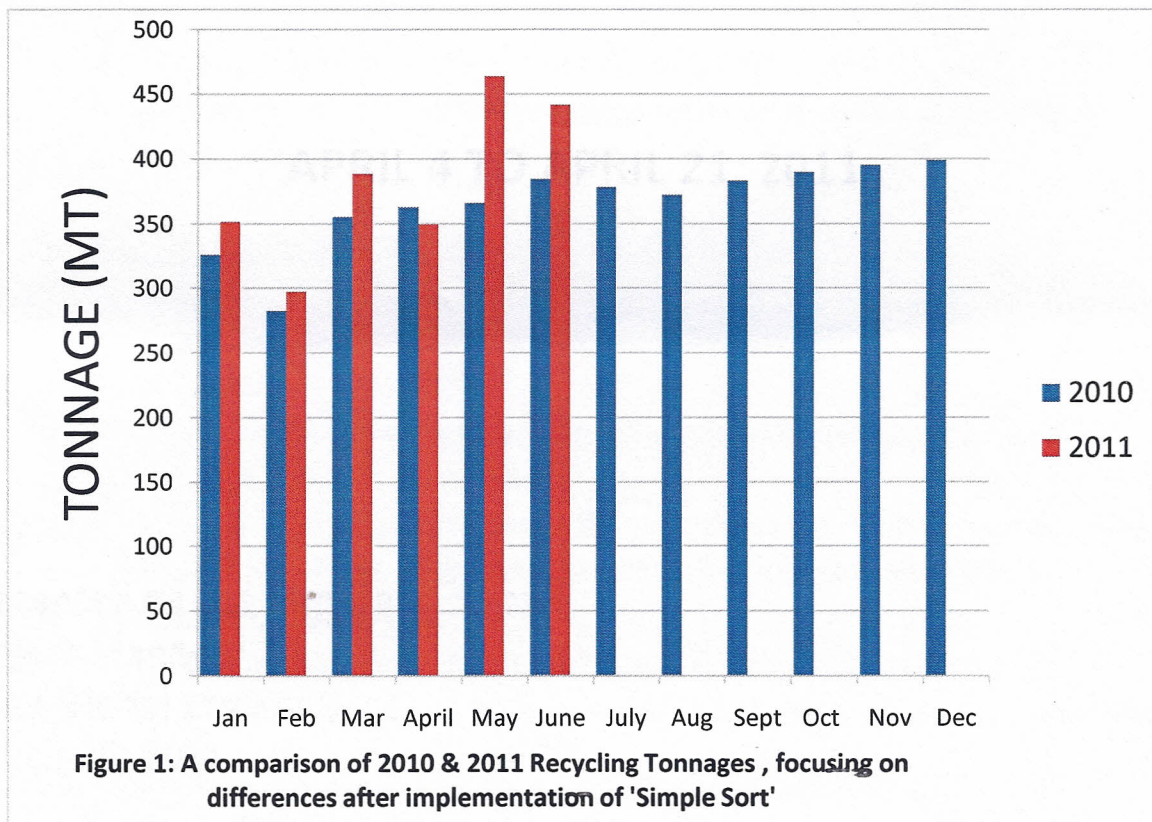
PAGE 1 OF 1

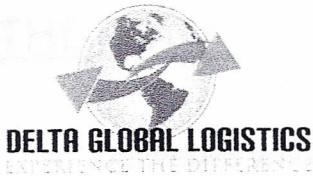
**SUBJECT: CONTINUOUS IMPROVEMENT FUND PROJECT #563.3
LARGE CURBSIDE CONTAINERS**

During the month of April, a second larger recycling box was delivered to each household in Norfolk County. The taller 22 gallon box is for recyclable containers and residents are to use their existing smaller (16 gallon) recycling box for paper fibres recycling. The official launch date for residents to start using the new simple two stream sort recycling program was May 2, 2011. The new boxes are black in colour with the County logo hot stamped on the front and sorting information on the opposite side of the box.

A tendering process was entered into for the delivery of the boxes and Delta-Global Logistics was awarded the contract. The tall boxes were delivered door to door to each household in Norfolk County. The delivery period ran from April 2 to April 21st 2011. An excerpt from Delta-Global Logistics's Delivery Plan is attached for additional information.

Figure 1 shows a comparison of 2010 to 2011 recycling tonnages and of note are the months of May and June which show a notable increase in tonnage with the start of the program.





DELIVERY PLAN AND MAPS

NORFOLK COUNTY

DOOR TO DOOR DELIVERY OF RECYCLING BINS

APRIL 4 TO APRIL 21, 2011

Presented by Graham Henrickson

Project Manager

Delta Global Logistics, Inc.

March 25, 2011

THE PLAN

- Deliveries will begin on April 4, 2011 and end no later than Thursday April 21, 2011.
- Deliveries will be conducted on Monday to Friday.
- Saturdays will be used as contingency if required.
- The County will be notified if DGL requires deliveries to be made on Saturdays.
- There will be no Sunday delivery.
- Deliveries will be made between the hours of 7 AM and 7 PM.
- The drivers will pick-up the Blue Boxes from the County facility on Grigg Drive in Simcoe.
- DGL will use at least 4 drivers to complete the deliveries.
- Additional drivers will be utilized if the delivery deadlines are not being met.
- The delivery schedule (details attached) is as follows:

URBAN DELIVERIES

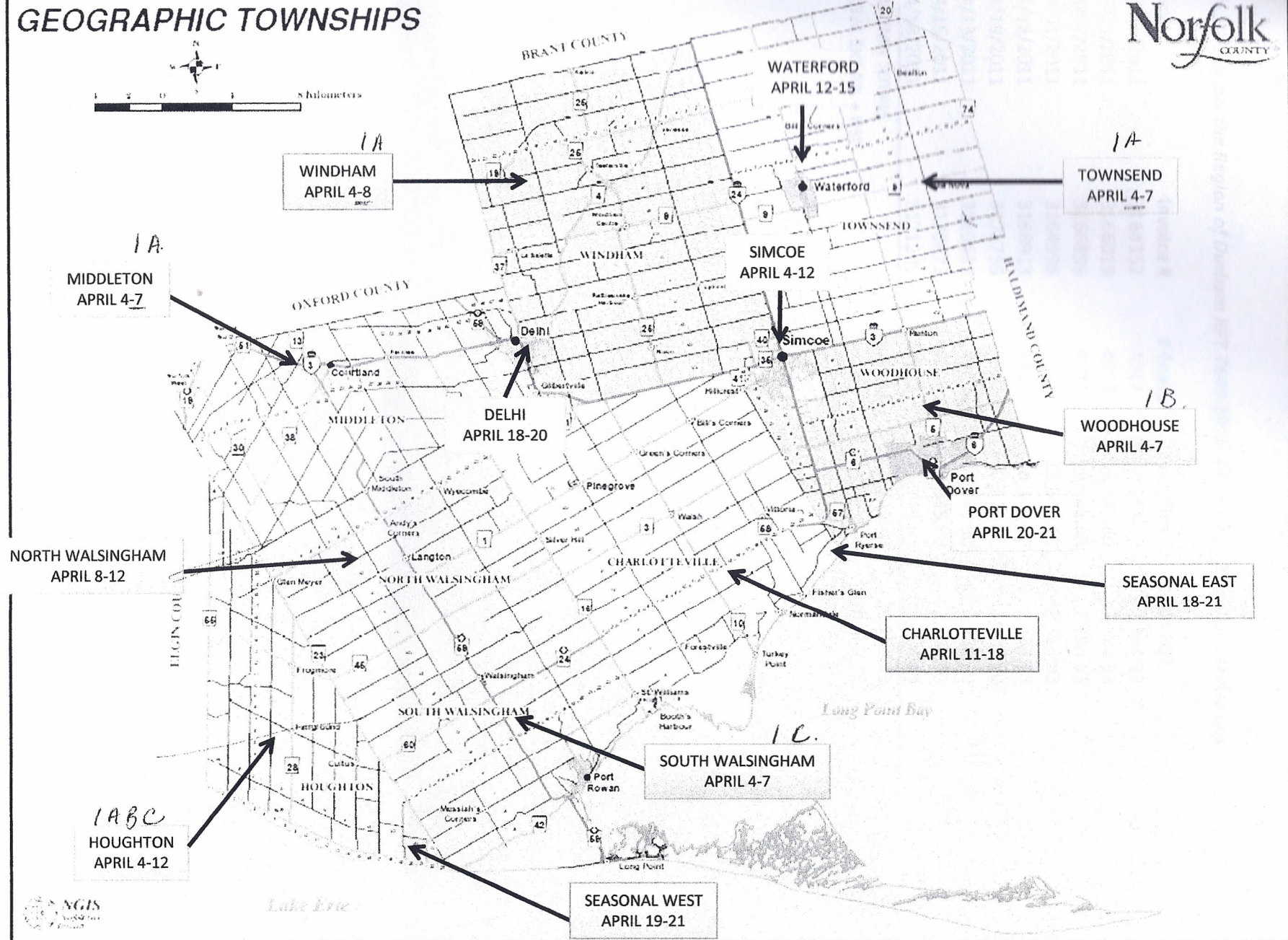
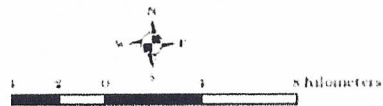
- Truck 1 – Simcoe > Waterford > Delhi > Port Dover.
- All towns will be 100% completed before the driver is allowed to move onto the next town.

RURAL DELIVERIES

- Truck 2 - Townsend > Woodhouse > Seasonal Properties on East side of County.
- Truck 3 - Windham > Charlotteville > Seasonal Properties on West side of County.
- Truck 4 – Middleton > North Walsingham > South Walsingham. The Township of Houghton will be delivered in unison with the 3 adjoining Townships.
- Deliveries will move from north to the lake in all cases.
- One Township will be 90% completed before the driver is allowed to move onto the next Township.

GEOGRAPHIC TOWNSHIPS

Norfolk
COUNTY



Simple Sort' Box Invoices

**Pricing as per the Region of Durham RFT.T649-2010. \$4.55/unit, 22 gallon recycle box*

Date	Invoice #	# Boxes	Ext. Price	1.8% HST
03/31/2011	3164352	4032	18,345.60	2,384.93
05/05/2011	3166019	4032	18,345.60	2,384.93
04/07/2011	3166899	4032	18,345.60	2,384.93
04/01/2011	3164996	4032	18,345.60	2,384.93
04/12/2011	3168913	4032	18,345.60	2,384.93
04/19/2011	3171755	2852	12,976.60	1,686.90
04/13/2011	3169612	4032	18,345.60	2,384.93
04/15/2011	3170673	4032	18,345.60	2,384.93
04/18/2011	3171209	<u>4032</u>	<u>18,345.60</u>	<u>2,384.93</u>
COLUMN TOTALS		35,108.00	159,741.40	20,766.34
TOTAL EXT PR. + HST				180,507.74

Simple Sort' Evaluation by Tonnage

Simple Sort' begins

	Jan	Feb	Mar	April	May	June	July	Aug	Sept	Oct	Nov	Dec
2010	326.42	282.46	355.31	362.79	365.99	384.39	378.27	372.41	383.14	389.93	395.52	399.21
2011	351.59	297.25	388.74	349.59	463.79	441.57						
2012												

% Diff 2010 to 2011	7.7109	5.23614	9.40869	-3.63847	26.72204	14.87552						
% Diff 2011 to 2012												

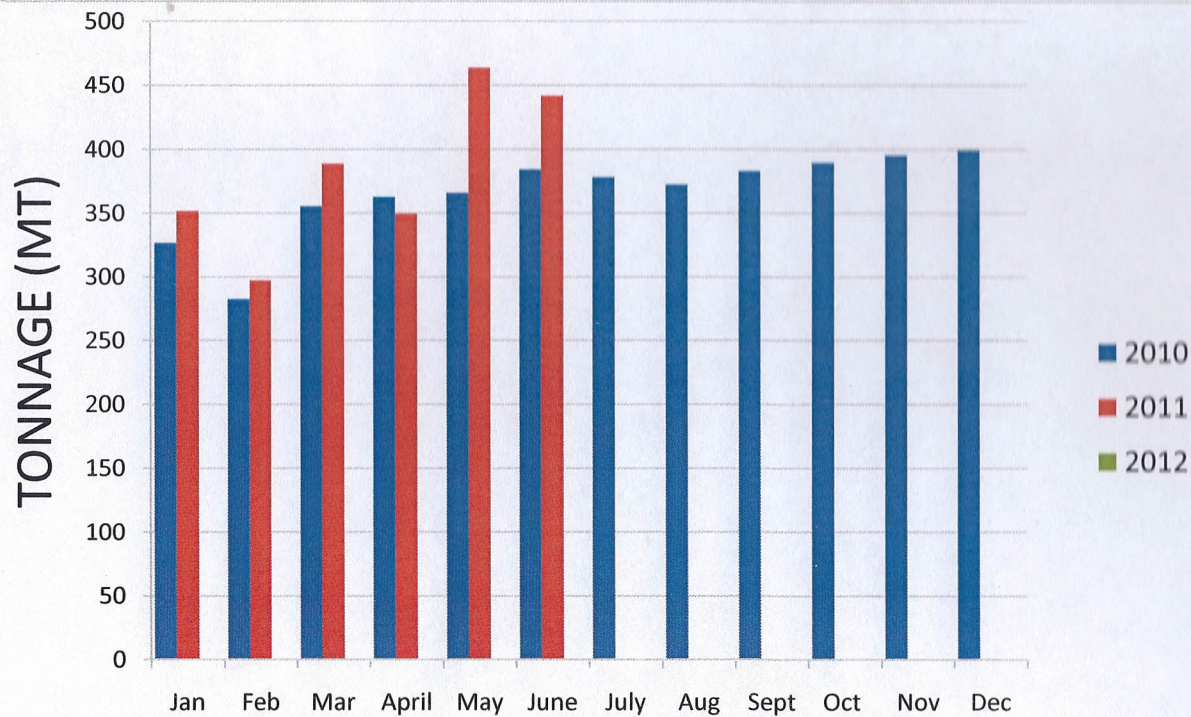


Figure 1: A comparison of 2010, 2011 & 2012 Recycling Tonnages , focusing on differences after implementation of 'Simple Sort'

Figure 1 Backup Page