

	MONTHLY AVERAGES (CDN\$/Metric Tonne)																		# of Muni. (Monthly Change)
	Dec	Jan	Feb	Mar	Apr	May	June	July	Aug	Sept	Oct	Nov	Dec	Jan	Feb	Mar	Apr	May	
	2016	2017	2017	2017	2017	2017	2017	2017	2017	2017	2017	2017	2017	2018	2018	2018	2018	2018	
Newspaper (ONP #8 / SRP #56) ¹	123	131	146	154	119	96	112	129	122	111	84	83	85	88	83	72	54	48	7 (-1)
Mixed Paper #54 / ONP#6 ²	96	110	123	130	80	62	83	96	89	75	33	29	36	33	25	18	2	(2)	7 (-1)
Corrugated (OCC)	160	174	216	281	255	235	249	262	255	243	161	163	165	160	147	147	130	120	11 (-1)
Hardpack (OBB/OCC)	104	117	143	166	135	na	136	155	153	143	78	81	73	86	65	74	57	57	5 (-1)
Boxboard (OBB)	na	na	na	na	na	na	na	na	na	na	na	na	na	na	na	na	na	na	3 (1)
Polycoat Containers	109	115	120	110	94	102	61	43	49	29	35	53	38	45	46	42	50	70	9 (-2)
PET (mixed)	266	285	296	324	359	391	439	444	452	440	396	352	352	342	351	373	390	416	13 (-2)
HDPE (mixed)	405	410	472	615	631	541	439	419	444	446	489	530	472	434	464	496	531	527	11 (-4)
Plastic Tubs & Lids	na	na	na	na	na	na	na	na	na	na	na	na	na	na	na	na	na	na	2 (0)
Mixed Plastics ³	32	38	39	44	39	38	34	35	32	24	24	21	25	30	39	43	40	49	12 (-1)
Film Plastic	27	30	28	26	24	21	33	37	32	18	13	20	19	11	15	16	14	18	6 (-1)
Aluminum Cans	1666	1731	1829	1909	1877	1819	1721	1666	1729	1751	1809	1791	1681	1723	1756	1788	1828	1994	13 (-1)
Steel Cans	227	252	245	297	279	288	275	263	262	254	228	232	258	283	280	320	345	341	14 (-1)
Glass (mixed)	(37)	(38)	(38)	(38)	(38)	(36)	(44)	(41)	(42)	(42)	(43)	(43)	(50)	(53)	(56)	(49)	(42)	(35)	8 (-1)
Composite Index	141	151	170	192	169	152	161	172	168	159	128	126	126	129	125	124	114	114	
Fibre Composite Index⁴	127	137	159	179	146	124	139	155	148	137	98	97	99	103	95	87	70	64	
Container Composite Index⁵	180	192	203	229	232	231	223	220	225	221	214	208	200	205	210	226	239	256	

	YEARLY AVERAGES (CDN\$/Metric Tonne)																		
	2001	2002	2003	2004	2005	2006	2007	2008	2009	2010	2011	2012	2013	2014	2015	2016	2017	2018	
Newspaper (ONP #8 / SRP #56) ¹	76	100	99	114	101	89	118	121	72	90	126	76	71	69	72	103	111	69	
Mixed Paper #54 / ONP#6 ²															43	73	73	15	
Corrugated (OCC)	55	106	89	114	95	80	131	111	68	149	173	133	131	131	127	152	221	141	
Hardpack (OBB/OCC)	38	63	62	75	68	50	89	76	42	74	95	61	53	51	66	91	121	68	
Boxboard (OBB)			43	62	53	41	70	62	26	61	84	62	46	48	50	50	na	na	
Polycoat Containers	57	58	64	67	66	59	84	75	39	105	127	96	65	79	114	114	64	51	
PET (mixed)	324	166	278	432	507	314	368	352	187	391	652	431	372	377	295	265	383	374	
HDPE (mixed)	257	233	364	428	683	565	524	573	320	464	562	552	497	659	617	533	497	490	
Plastic Tubs & Lids	5	0	12	51	104	128	146	204	22	54	247	265	na	na	na	na	na	na	
Mixed Plastics ³											48	32	38	46	58	61	32	40	
Film Plastic	26	0	8	55	148	137	51	35	3	13	25	23	14	29	47	40	24	15	
Aluminum Cans	1700	1709	1619	1772	1763	2169	2065	1904	1215	1591	1790	1516	1523	1783	1548	1576	1772	1818	
Steel Cans	26	47	76	191	116	141	168	245	89	263	335	277	257	299	179	200	262	314	
Glass (mixed)	(15)	(15)	(19)	(12)	(31)	(31)	(31)	(24)	(18)	(15)	(11)	(18)	(22)	(22)	(30)	(37)	(42)	(47)	
Composite Index	95	113	114	131	124	111	145	150	80	124	169	118	107	117	105	129	154	121	
Fibre Composite Index⁴															77	109	132	84	
Container Composite Index⁵															188	184	217	227	

Pricing Notes:

- Paper Stock Industries (PSI) have eliminated the ONP#8 grade specification. For continuity, the new PSI grade specification, Sorted Residential Paper (SRP #56), has been included as it most closely represents the ONP#8 commodity ON municipalities are producing.
- Paper Stock Industries (PSI) have eliminated the ONP#6 grade specification and added a new PSI grade specification, Mixed Paper #54. Mixed Paper has already been capture on the price sheet with the new grade number being added.
- The composition for mixed plastics varies from each municipality based on the range of materials accepted and the specifications from their end markets.
- The Fibre Composite Index is calculated using ONP#8 / SRP#56, Mixed Paper #54 / ONP#6, Corrugated (OCC), Hardpack (OBB/OCC), and Boxboard (OBB).
- Polycoat containers are included in the container composite index and NOT the fibre composite index.

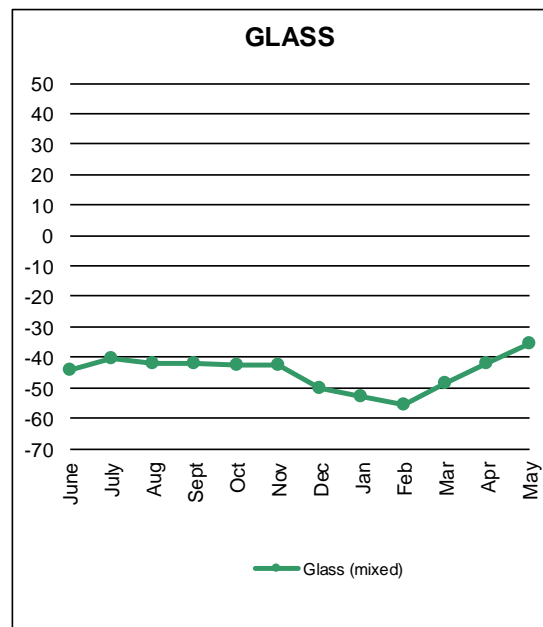
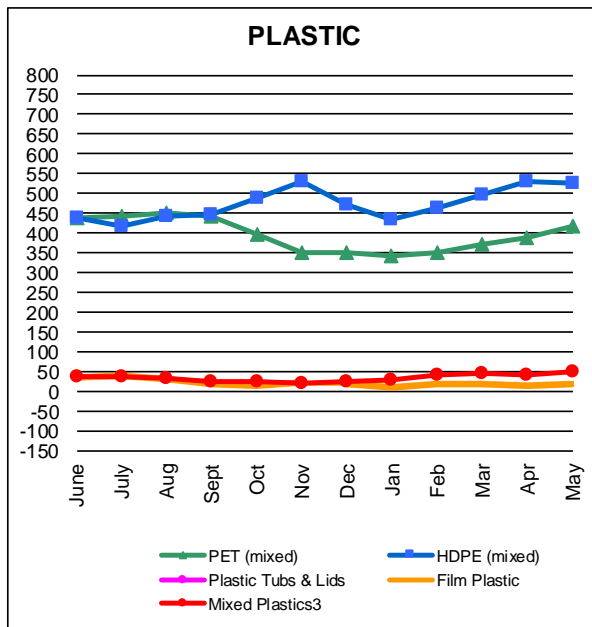
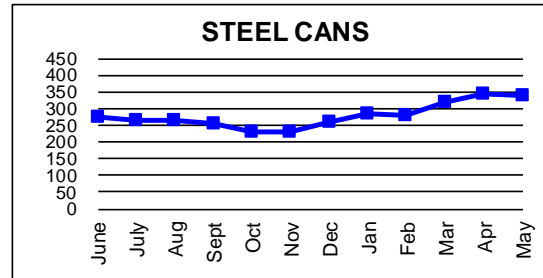
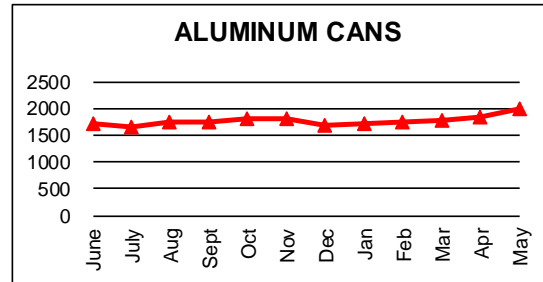
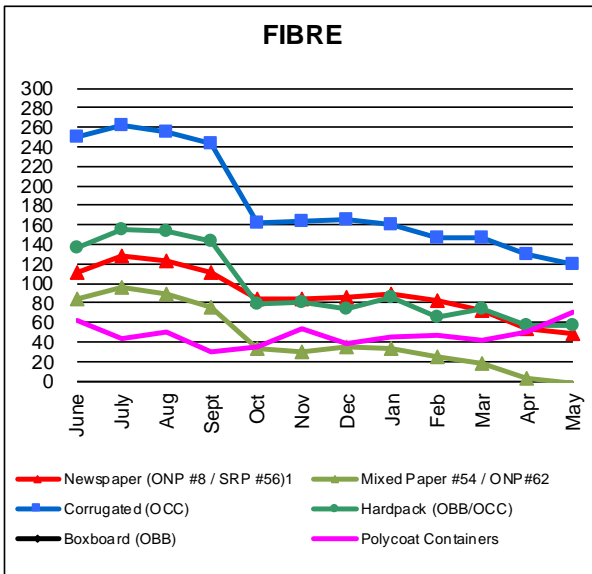
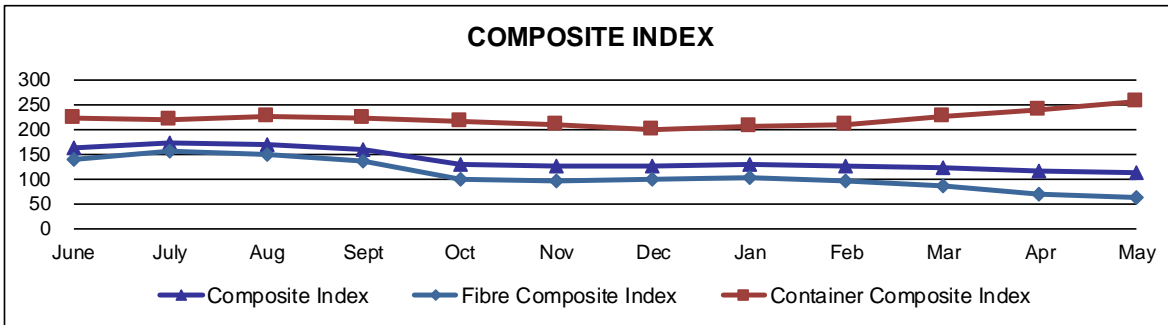
General Notes:

- Prices are for baled post-consumer residential materials except glass, which is loose.
- As of May 2012, prices for all materials are FOB the municipality including glass. Prior to May 2012, prices for glass were delivered prices.
- The Composite Index is calculated using the overall composition of residential Blue Box material recovered and marketed in Ontario as reported from the approved 2016 RPRA (formerly WDO) Datacall with some additional allocations to material categories. Mixed glass includes coloured glass. Composition figures are updated annually. Details available upon request.
- Materials with a listed price of "NA" indicate either an insufficient number of municipalities reported a price in the given month (<4) or variation in the reported price which is not considered representative of Ontario.
- Prices are compiled from a range of municipal programs across Ontario combined with information from industry representatives. Prices may not be the same as actual prices being paid in any given program.

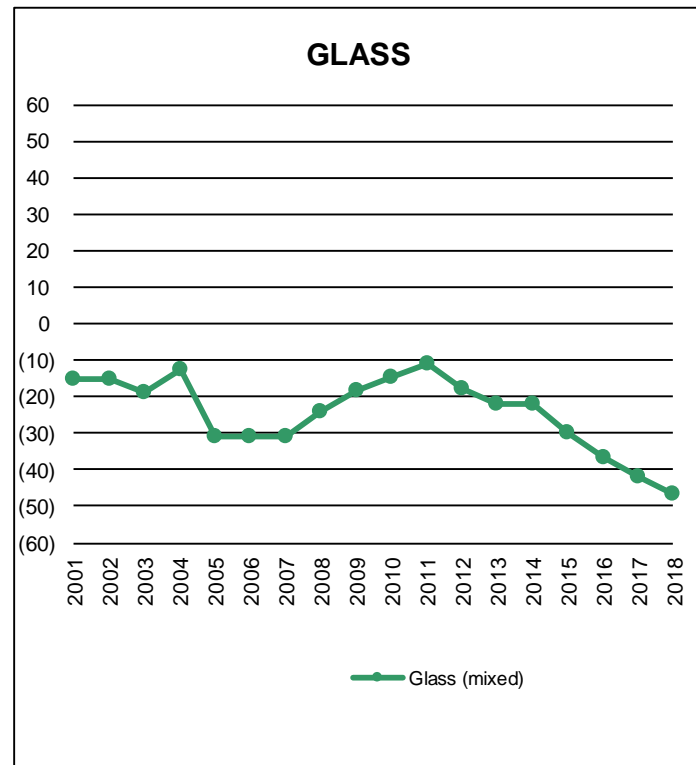
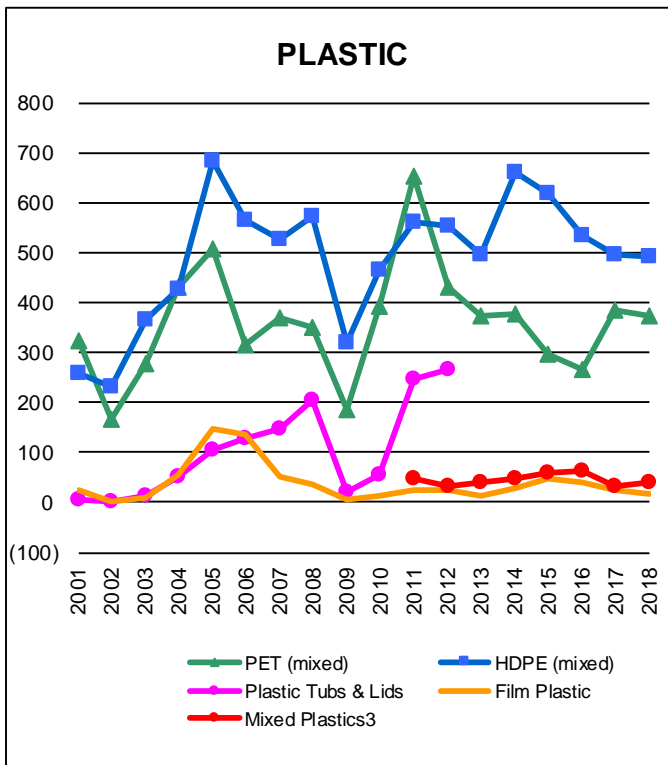
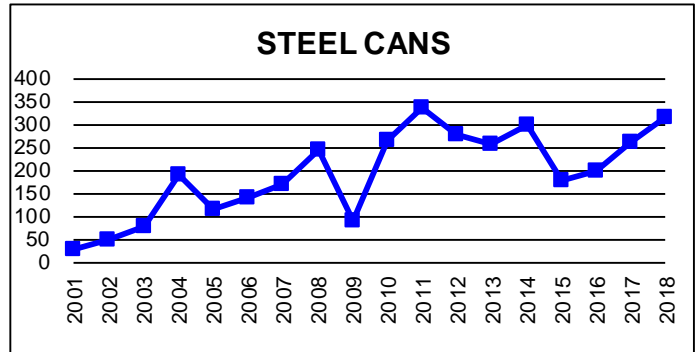
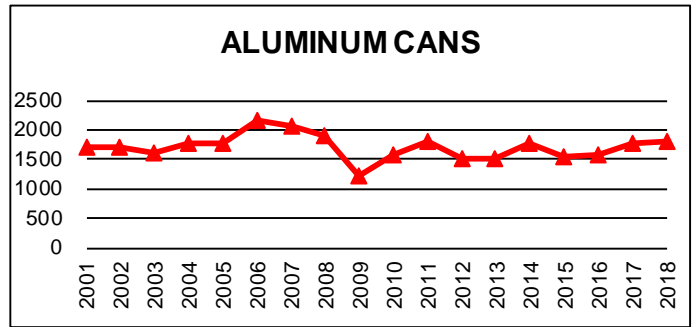
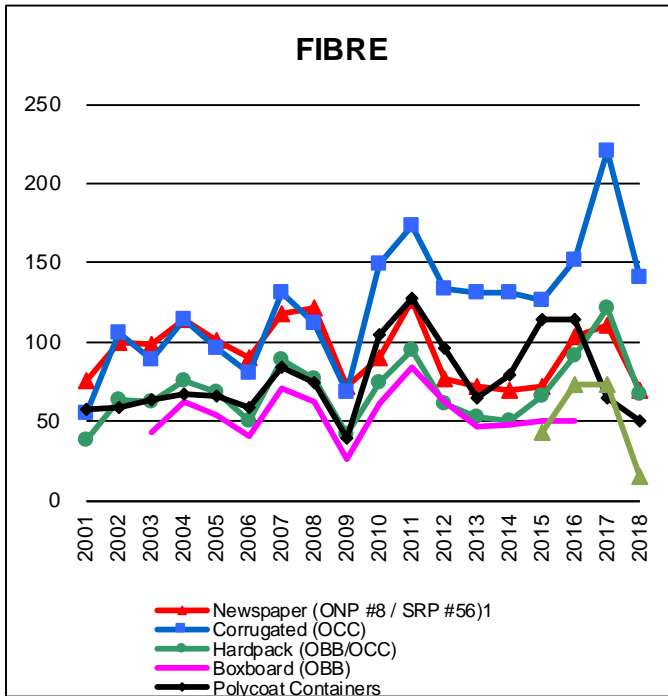
For more information:

Neil Menezes, Reclay StewardEdge
nmenezes@reclaystewardedge.com, 416-644-8349

© CIF 2018



Graphs produced from Monthly Averages Table.



Graphs produced from Yearly Averages Table