

**Recycling Contract Development and Transfer Evaluation
For the Town of Mattawa and the Township of Papineau-Cameron
CIF Project #180**

1. Introduction

The communities Papineau-Cameron and Mattawa operate a cooperative two stream curbside recycling program which features bi-weekly collection of containers and fibres and transportation to a processor. The services are provided by a private sector entrepreneur located in the area. The recycling contract expires at the end of 2009 and will need to be re-tendered.

In anticipation of the re-tendering of the recycling contract, the two communities identified a desire to explore opportunities to develop a multi-municipal recycling and processing tender and determine the viability of establishing a blue box materials transfer facility to expedite more cost effective transfer of blue box materials to the processing market.

Due to a lack of available resources, the communities applied to the Continuous Improvement Fund for assistance in coordinating and facilitating the development of a multi-municipal recycling contract and transfer station evaluation. The following details the work undertaken.

2. Key Objectives

The original scope of work changed during the course of the project becoming a more narrowly focussed scope of work with the key objectives identified as:

- Facilitating discussions with five neighbouring local municipalities (Township of Papineau-Cameron, the Town of Mattawa, the Township of Mattawan, Calvin Township and the Township of Head, Clara and Maria) to determine the level of interest in pursuing a collective recycling collection and processing contract; and
- Evaluating the need for a recycling transfer facility.

3. Community Profiles

A survey was conducted with each of the five identified communities to gain insight into their existing waste management and diversion programs and recycling contract. Each community's recycling program is summarized below.

Township of Papineau-Cameron

Demographics:

- Population – 1058 (Statistics Canada) , 1058 (2007 datacall)
- Seasonal population – 45 (2007 datacall)
- SF households – 415 (Statistics Canada) , 532 (2007 datacall)

Garbage:

- Garbage - As of September 1, 2005, bag limits are 2 bags/household/week. - January 1, 2005, garbage bags must be see-through
- Pick up of garbage is: Bi-weekly from November 1 to April 30, Weekly from May 1 to October 31

- Garbage collection contract with Paul Lafrenier Contracting
- Landfill located in Papineau-Cameron and shared with Town of Mattawa and Township of Mattawan

Recycling:

- Waste diverted 50.50 tonnes (46 kg/hh/yr) - 13% diversion rate (2007 datacall)
- Recycling services provided to 532 SFH and 30 commercial establishments
- Recycling is bi-weekly all year and collected as a three stream system – containers, papers and cardboard (bundled)
- Recycling contract with Paul Lafrenier Contracting – a local contractor
- Recyclables are collected using a trailer with three compartments that can be attached to a four wheel truck – three streams sorted at the curb and at end of collection, the material is driven to the processor about 80 km away (near North Bay)
- Contractor drives to processor 5 times per week
- Garbage contract separate from recycling contract but both designed to expire at end of 2009
- Contract price is based on number of households and distances from household to household
- Recycling collection contract cost = \$24,126 in 2008 (\$43 per hhld/yr)
- Materials are processed by private processor in North Bay
- Processing is a separate cost at \$75/tonne (\$2,824 in 2008 or \$5 per hhld/yr)

Town of Mattawa

Demographics:

- Population – 2,003 (Statistics Canada) , 2112 (2007 datacall)
- Seasonal population – 0 (2007 datacall)
- SF households – 860 (Statistics Canada) , 748 (2007 datacall)

Garbage:

- Same contract shared with Papineau-Cameron
- Garbage - As of September 1, 2005, bag limits are 2 bags/household/week. - January 1, 2005, garbage bags must be see-through
- Pick up of garbage is: Bi-weekly from November 1 to April 30, Weekly from May 1 to October 31
- Garbage collection contract with Paul Lafrenier Contracting
- Landfill located in Papineau-Cameron and shared with Town of Mattawa and Township of Mattawan

Recycling:

- Waste diverted 173 tonnes (81 kg/hh/yr) - 21% diversion rate (2007 datacall)
- Recycling services provided to 850 SFH, 250 MFunits and 80 commercial establishments
- Recycling is bi-weekly all year and collected as a three stream system – containers, papers and cardboard (bundled)
- Recycling contract with Paul Lafrenier Contracting – a local contractor
- Recyclables are collected using a trailer with three compartments that can be attached to a four wheel truck – three streams sorted at the curb and at end of collection, the material is driven to the processor about 80 km away (near North Bay)
- Contractor drives to processor 5 times per week
- Garbage contract separate from recycling contract but both designed to expire at end of 2009
- Contract price is based on number of households and distances from household to household
- Recycling collection contract cost = \$45,000 in 2008 (\$38 per hhld/yr)

- Materials are processed by private processor in North Bay
- Processing is a separate cost at \$75/tonne (\$12,000 in 2008 or \$10 per hhld/yr)

Calvin Township

Demographics:

- Population – 608(Statistics Canada) , 620 (2007 datacall)
- Seasonal population – 34 (2007 datacall)
- SF households – 220 (Statistics Canada) , 301 (2007 datacall)

Garbage:

- All garbage must be taken to the municipal landfill
- The Township does not provide curbside garbage collection services
- Partial PAYT – first 120 bags of garbage are free of charge and then pay \$1/bag

Recycling:

- Waste diverted 26 tonnes (86 kg/hh/yr) - 13% diversion rate (2007 datacall)
- All recyclables must be taken to the recycling depot at the municipal landfill
- The Township does not provide curbside recycling services
- Depot Recycling at the landfill – three streams (containers, fibres, OCC/OBB)
- Processing costs = \$7,395 in 2008 (\$24 per hhld/yr)

Township of Head, Clara and Maria

Demographics:

- Population – 228 (Statistics Canada) , 339 (2007 datacall)
- Seasonal population – n.a. (2007 datacall)
- SF households – 105 (Statistics Canada) , 339 (2007 datacall)

Recycling:

- Waste diverted 32 tonnes (94 kg/hh/yr) - 20% diversion rate (2007 datacall)
- Recycling services provided to 339 SFH
- Recycling is bi-weekly all year and collected as a two stream system – containers and fibres
- Recycling contract with Recyclage Universal R.D.J. – a contractor based in Quebec
- Recyclables are collected using a van in which materials are placed in bags (one bag for containers and one bag for fibres)
- Recycling collection contract cost = \$20,700 in 2008 (\$61 per hhld/yr) – this includes bulky waste collection
- Materials are processed by private processor in Victoriaville, Quebec and is included in the contract price

Township of Mattawan

Demographics:

- Population – 147 (Statistics Canada)
- SF households – 120 (Statistics Canada) ,

Recycling:

- Waste diverted not available – the Township has not registered with WDO yet
- Recycling services provided to 120 SFH
- Recycling is bi-weekly all year and collected as a four stream system – fibres, aluminum & steel cans, PETE & HDPE containers, glass containers
- Recycling contract with Sloan Cartage

- Recyclables are collected using a half tonne
- Recycling collection contract cost = \$9,881 in 2008 (\$82 per hhld/yr)
- Township is not sure where materials are processed

4. Description of Recycling Program in Mattawa and Papineau-Cameron

The Town of Mattawa and the Township of Papineau-Cameron are situated on the northern part of the Ottawa River, about 100 km east of North Bay. These small rural communities (combined population 3,000 with 1,200 single family households) provide bi-weekly curbside recycling services to residents using the services of a local entrepreneur, P. Lafreniere Contracting. The company collects a wide range of recyclables using a two stream, containers and fibres, system.

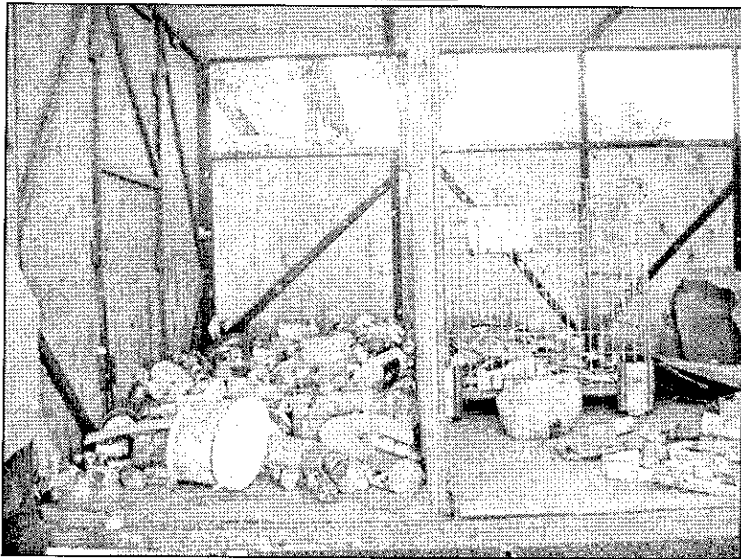
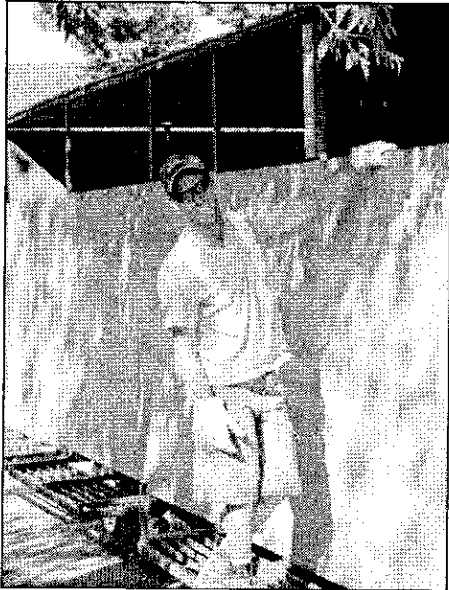
Due to the size of the communities serviced, the contractor could not justify investing in a recycling truck which was further complicated by the need to drive three hours (return) in order to deliver the recyclable materials for processing five times every two weeks. In response, the owner of the company devised a simple, cost effective collection system featuring a custom made recycling trailer which is pulled by a standard pick-up truck. The recycling trailer was designed and built by P. Lafrenier and is essentially a box built on a 24 ft. trailer base. The trailer dimensions are 24 feet long by 10 ft wide and 6 feet 10 inches high with several openings at one side of the trailer and a platform to enable the collection crew to step up and sort the containers and fibres into the designated openings. The trailer features three separate areas for:

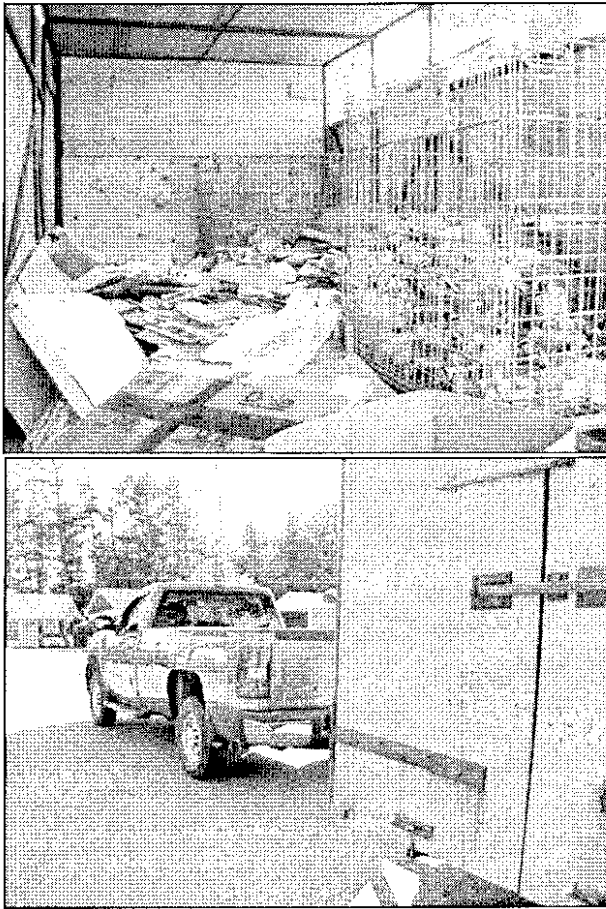
- household mixed paper and newspaper (ONP) in one area;
- cardboard (OCC) and boxboard (OBB) in a second area; and
- containers in a third area.

While one person drives the pick up truck, another person collects and sorts the materials.

The contractor is capable of collecting from 400 homes before the trailer needs to be emptied. In order to expedite removal of the recyclable materials, the back of the trailer opens and the side containing the containers opens. The floor of the trailer is strong enough to enable the contractor to operate a bobcat to remove the fibres from inside the trailer, or alternatively, the contractor moves the materials out of the trailer using a shovel. The trailer also features wire bins which can be used for additional materials and can be easily tipped to remove the contents from the trailer.

The photos below show the recycling trailer used in the Town of Mattawa and the Township of Papineau-Cameron.





Photos: Recycling trailer used in Mattawa and Papineau-Cameron

5. Site Visit

In order to facilitate the discussions with local municipalities and evaluate the transfer facility option, a site visit was undertaken in early September.

5.1 Meetings

During the site visit, a number of meetings and discussions were held with five area municipalities including, the Township of Papineau-Cameron, the Town of Mattawa, the Township of Mattawan, Calvin Township and the Township of Head, Clara and Maria. All six communities met the morning of September 10th to discuss the level of interest and practicality in developing a cooperative recycling tender among the six communities and to exchange information about innovative programs and practices that could be adopted by the other communities. In addition, individual meetings were held with staff of several of the communities to gain further knowledge and understanding of their existing waste management and diversion program.

During the meeting, each community described their recycling program and shared interesting features of their waste diversion initiatives. As it transpired, only the Township of Mattawan is in a position to

pursue a partnership with Papineau-Cameron and Mattawa in a cooperative recycling tender. Mattawan Township's current recycling collection and processing contract expires at the same time as Papineau-Cameron and Mattawa and there is some question as to where the recyclables are currently being processed, if at all. It also transpired that Mattawan Township does not receive WDO Blue Box funding and has never completed a WDO datacall survey.

In the case of the two other communities, neither community declared any interest in pursuing a cooperative recycling tender. Calvin Township is very satisfied with its existing depot system and has no reason to pursue a curbside collection program. Currently, all residents living in the Township must transport their garbage and recyclables to the municipal landfill for disposal. The Township does not offer curbside garbage or recycling services. Its recycling program is very convenient to use with the landfill attendant taking responsibility for collecting and sorting the recyclables from homeowner when they pull up to the recycling depot. Consequently, the program remains very cost efficient and is achieving credible diversion rates.

The Township of Head, Clara and Maria currently has a contract with a Quebec based company to collect recyclables curbside from its two largest communities. The contract extends until 2011 and, therefore, the Township is not in a position to further pursue a joint tender.

It was also revealed by the Public Works Superintendent of the Town of Mattawa that the Town has had discussion with Emterra Environmental (formally Halton Recycling Ltd.), to provide recycling and processing services to the Town of Mattawa and the Township of Papineau-Cameron. Currently, Emterra is pursuing composting opportunities with the Town at the former Tembec site.

5.2 Transfer Facility Evaluation

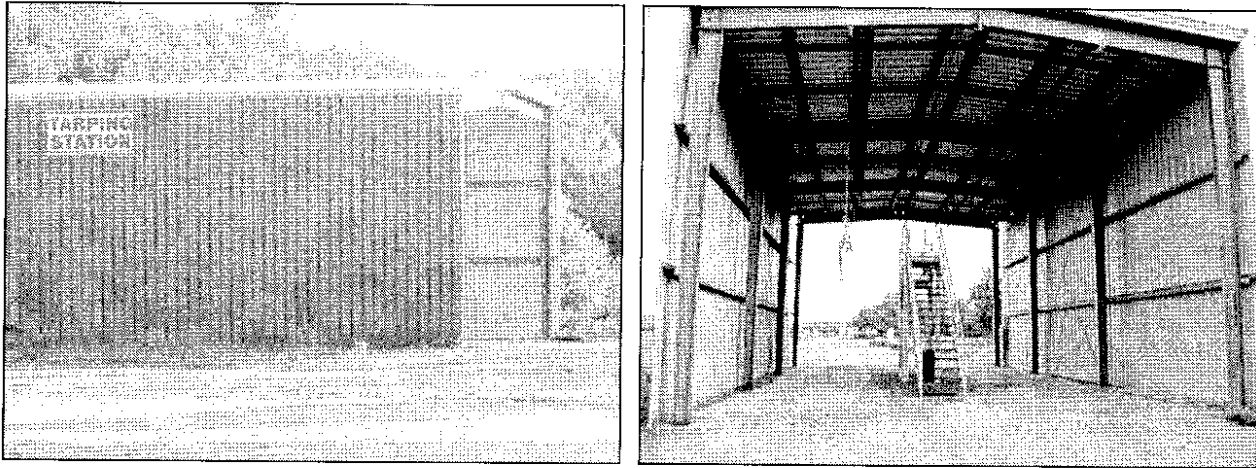
During the site visit it was revealed that the local recycling contractor, P. Lafreniere Contracting travels to the recycling processor, located west of the City of North Bay, five times a week. Each trip averages about 220 kilometers return and takes about three hours to complete, which includes tipping of the recyclables at the processing facility. This translates into 15 hours and about 1,100 km of transportation time every week to deliver the recyclables to the processing facility which seems to be a very inefficient method of transfer.

During the site visit, a tour was arranged of the recently closed Tembec Forest Product sawmill in Mattawa. The facility had been recently deemed unprofitable by the company and shut down. The local community of Mattawa had recently purchased the property and all the buildings from Tembec. In September 2009, Tembec reported on its website, "Tembec's permanently closed sawmill in Mattawa, Ontario, along with its 55 hectare site, has been sold to the Mattawa Bonfield Economic Development Corp. for \$1." The tour was established for local politicians, staff and interested public to explore potential business opportunities.

During the tour, it became apparent that there might be opportunities to use one of the buildings as a recycling transfer facility. The location has the advantages of:

- being located near the Town of Mattawa and the Township of Papineau Cameron;
- being located on the highway leading to North Bay; and
- having an operational weigh scale for transportation vehicles on the property.

The photos provided below identify the building that could be adapted for use as a transfer facility.



Photos: Potential Building for Use as a Recycling Transfer Facility at the Tembec Plant

6. Recommended Next Steps

It is recommended that the Town of Mattawa and the Township of Papineau-Cameron extend the existing contract with Paul Lafrenier Contracting for another year, to expire at the end of December, 2010. This will enable both communities to take the necessary time to sort out future relations with other interested parties, given that Emterra Environmental is considering establishing an organics operation in the area .

Furthermore, any future contract development and/or negotiations should consider inclusion of the Township of Mattawa. Based on existing information, it would appear that the Township could benefit by partnering with the others in a cooperative recycling contract.

In addition, in order to reduce travel time and costs associated with transporting the recyclable materials collected through the curbside recycling program (provided by the Town of Mattawa and the Township of Papineau-Cameron), it is recommended that the recycling program include the establishment of a recycling transfer facility.